

Trade Report

Ichimoku Kinko Hyo

Kumo Warriors

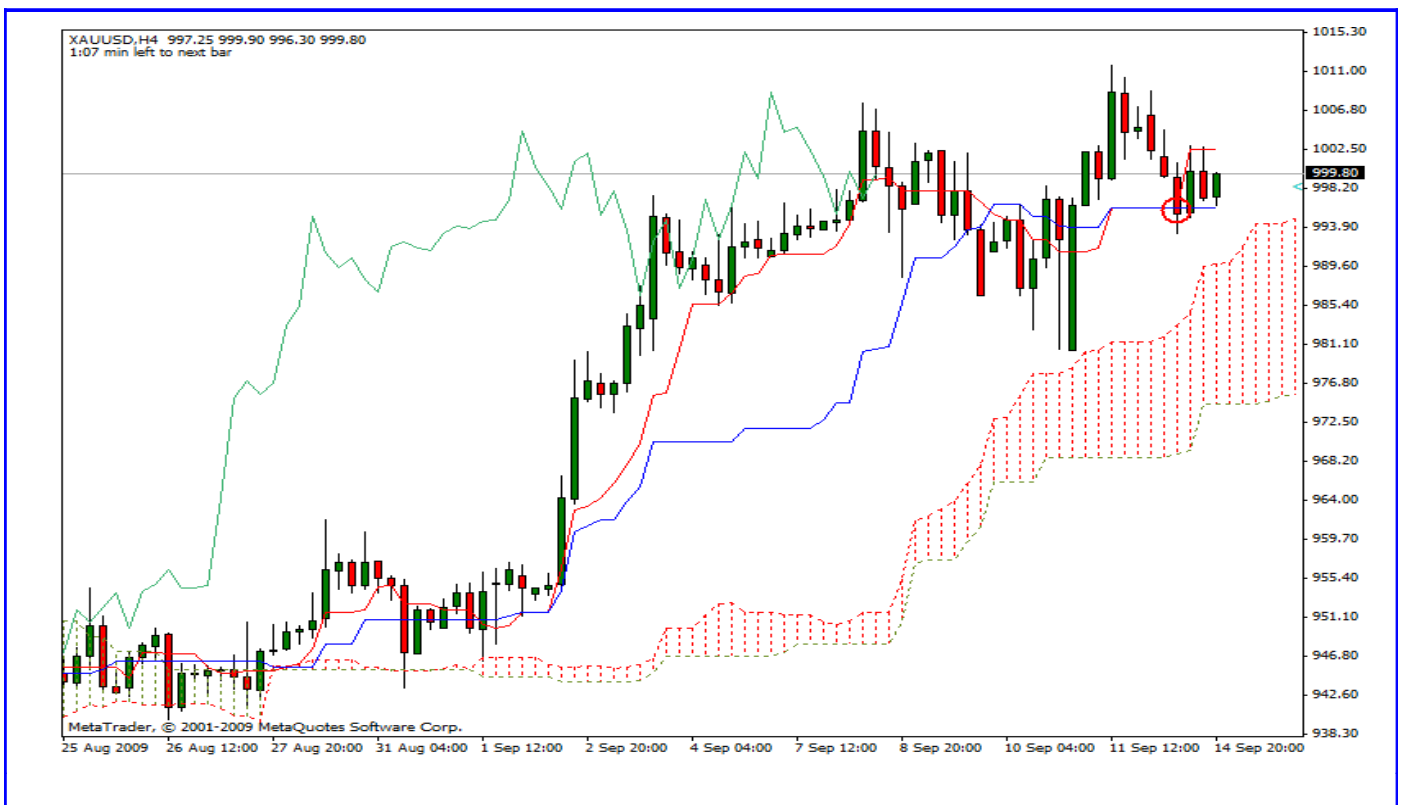
Technical Analysis Gold follow up

15 September 2009

This is a long term deal opened upon a signal on 4hrs chart; I have made a live follow up for the deal I'd like to explain it in the following report,

- All the captures were taken on the 4hrs charts

-Entry: Taken on a strong Ts Ks crossing, after price retracement entered from Ks, SL was below the cloud.



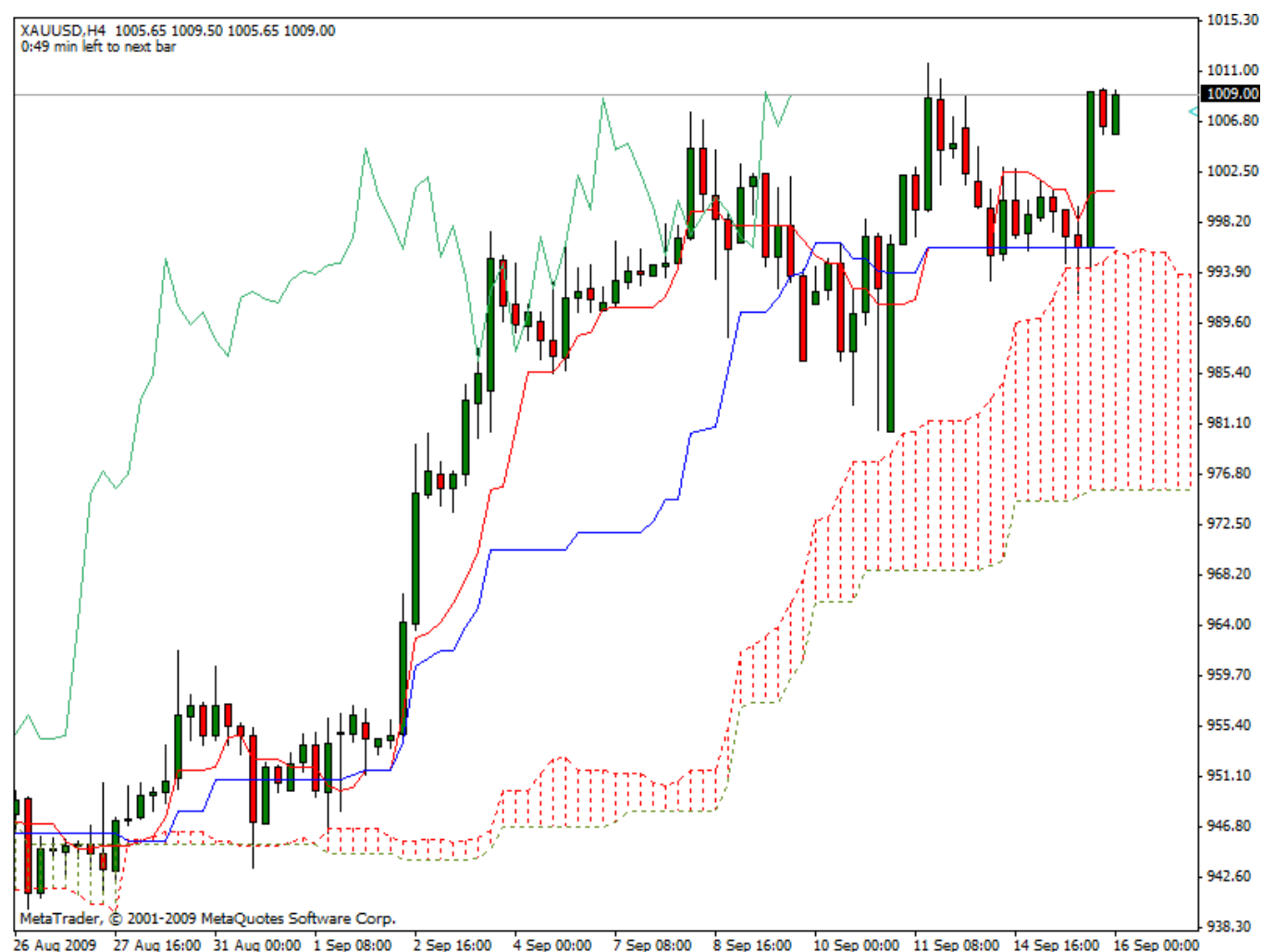
Disclaimer: all the data provided on this sheet are based upon the Ichimoku system analysis, all statements and expressions in here are personal opinions, and not meant as investment advice or solicitation.

Forex Factory: <http://www.forexfactory.com/showthread.php?t=190646>

Reports Archive: <http://www.4shared.com/dir/19807073/7e882875/sharing.html>

Email: KumoWarriors@gamil.com

-After 24Hr the pair started to resume the trend and this was confirmed by the Closing above Ts, then I decided to follow Ks as my stop adding a buffer.



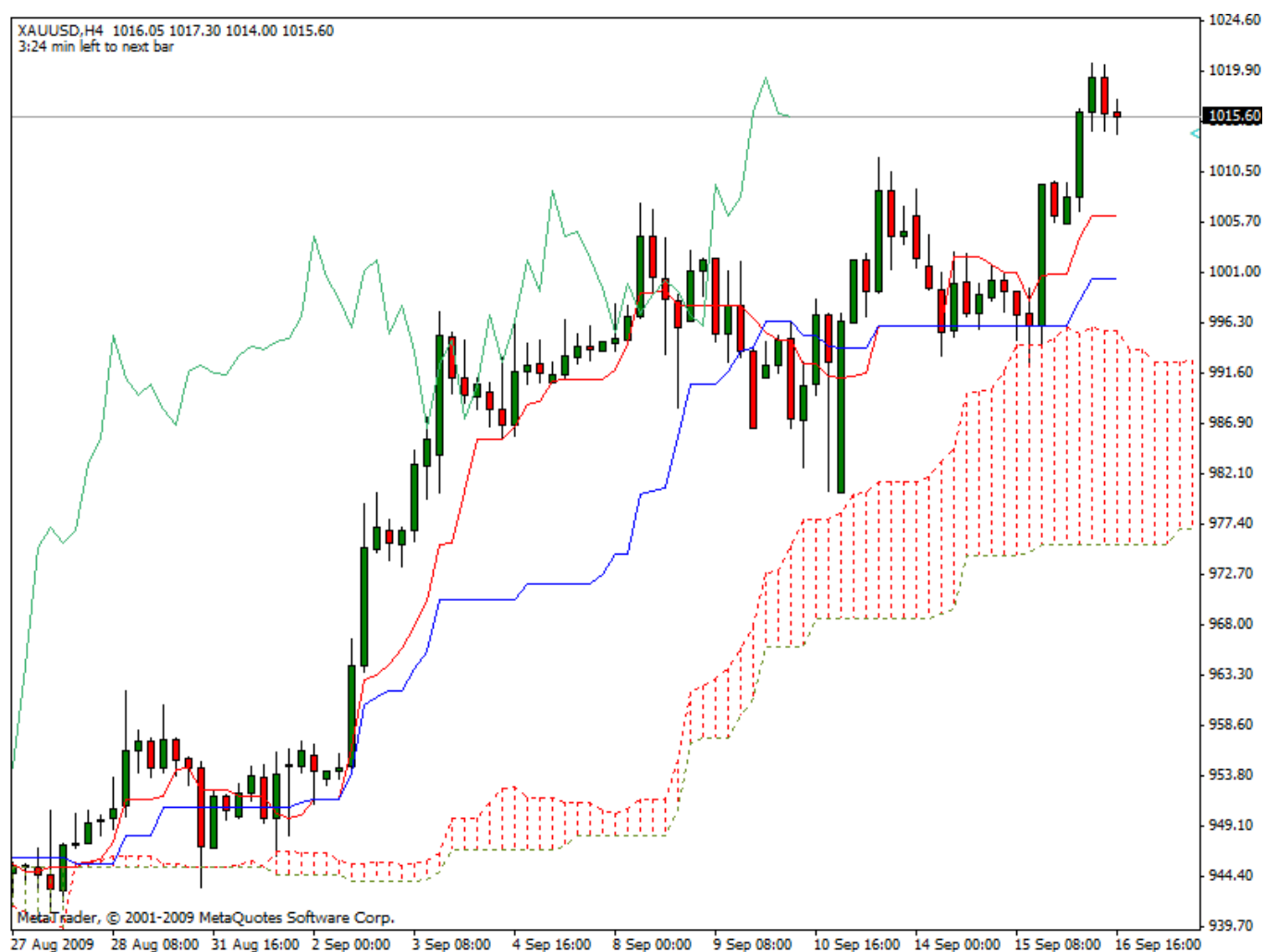
Disclaimer: all the data provided on this sheet are based upon the Ichimkou system analysis, all statements and expressions in here are personal opinions, and not meant as investment advice or solicitation.

Forex Factory: <http://www.forexfactory.com/showthread.php?t=190646>

Reports Archive: <http://www.4shared.com/dir/19807073/7e882875/sharing.html>

Email: KumoWarriors@gamil.com

-On the same day the price broke the Resistance and made another up move, also I moved my stop with Ks+buffer



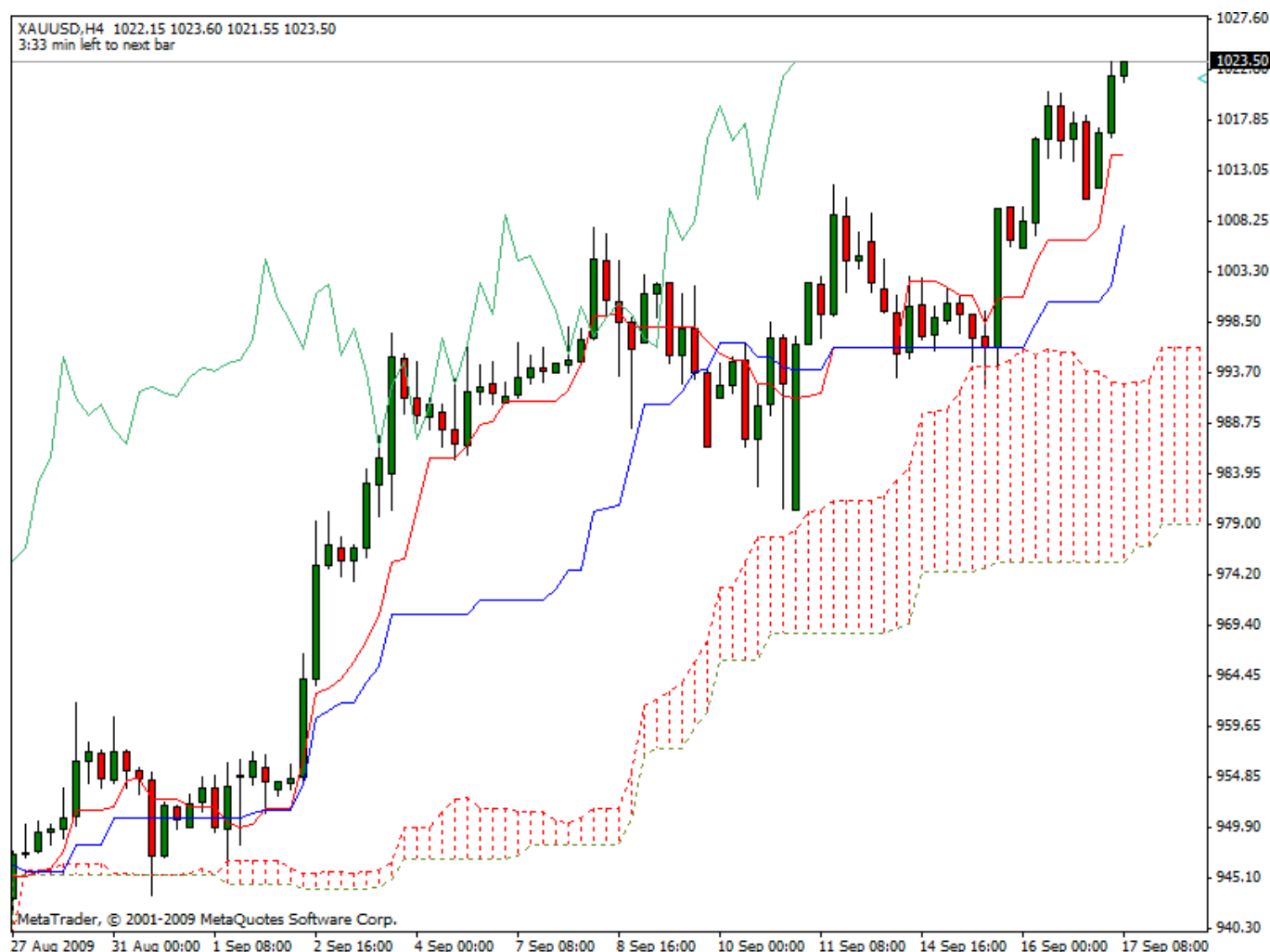
Disclaimer: all the data provided on this sheet are based upon the Ichimoku system analysis, all statements and expressions in here are personal opinions, and not meant as investment advice or solicitation.

Forex Factory: <http://www.forexfactory.com/showthread.php?t=190646>

Reports Archive: <http://www.4shared.com/dir/19807073/7e882875/sharing.html>

Email: KumoWarriors@gamil.com

-another 24Hrs and the pair still trending up reaching the 1023 area, I was just awaiting Ks to start looking flat to keep moving my SL and it did happen after this candle closed.



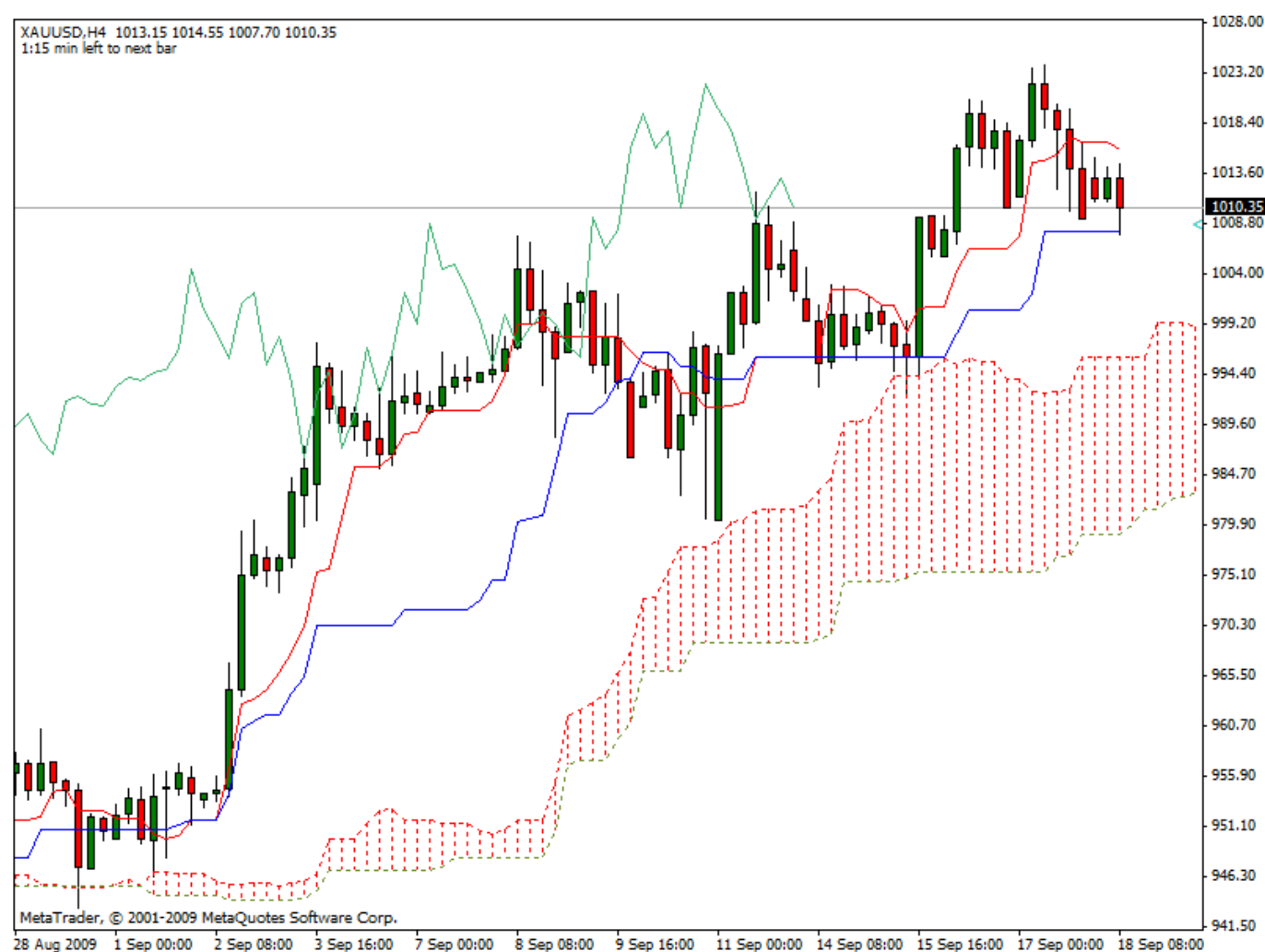
Disclaimer: all the data provided on this sheet are based upon the Ichimoku system analysis, all statements and expressions in here are personal opinions, and not meant as investment advice or solicitation.

Forex Factory: <http://www.forexfactory.com/showthread.php?t=190646>

Reports Archive: <http://www.4shared.com/dir/19807073/7e882875/sharing.html>

Email: KumoWarriors@gamil.com

Rejection from the 1023 area, I remember that in this day I asked sinner in the thread about the next resistance are as he have good experience with gold he advised it is 1030 area, so the pull back was expected as below, Ks still holding



Conclusion: Am still holding this trade to build an experience about the pair move and the Buffer needed with Ks to manage this deal .will keep updating this report with the progress

Disclaimer: all the data provided on this sheet are based upon the Ichimoku system analysis, all statements and expressions in here are personal opinions, and not meant as investment advice or solicitation.

Forex Factory: <http://www.forexfactory.com/showthread.php?t=190646>

Reports Archive: <http://www.4shared.com/dir/19807073/7e882875/sharing.html>

Email: KumoWarriors@gamil.com