

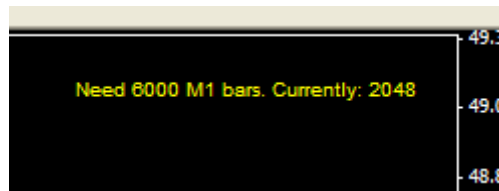
“The indicator doesn’t look right. What’s wrong?”

If you have loaded the indicator onto a new pair that has too few bars it can cause the lines to look strange.



I am not sure why but MT4 will only load 2048 bars whenever a new currency pair is loaded. My pivot indicator needs to have about 6000 M1 bars loaded to display everything correctly. The current version, V1.5, will display what it can even if there are less than 6000 bars although 2048 is a sufficient amount to display pivots for today.

If there are less than 6000 M1 bars the indicator will display a message in the upper right corner stating the bars are insufficient and how many are detected. If there are more than 6000, the message will not display.



In order to get all lines and prior days to display correctly you will need to have MT4 load them. There are a few ways to do this. Method 1 would be to wait three days and the bars will be loaded real time.

Method 2:

If there is less than 6000 bars switch to the M1 timeframe and hold down the HOME key for a while until the message disappears. HOME takes you to the first bar and then loads in some more bars from the server. Keeping HOME held down moves you to the new first bar and more bars are loaded.

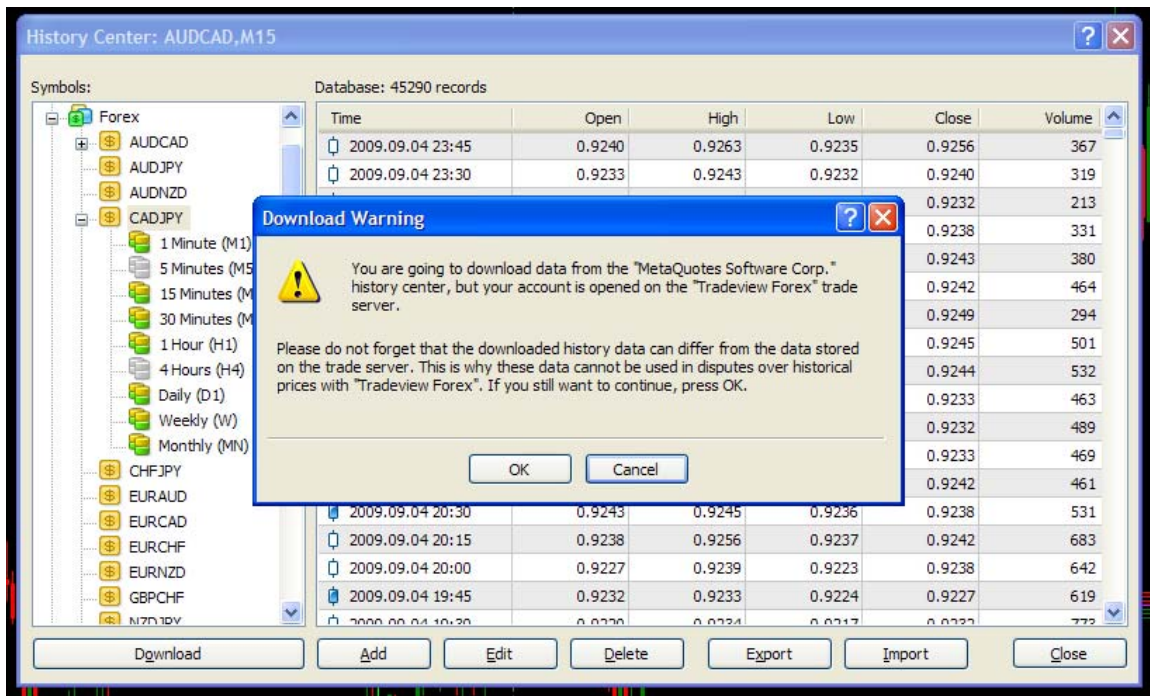
I have found at least one broker that does not provide more than 2048 bars. It is a demo account and I would hope they provide more on their live server. With that situation you are stuck. Try another broker.

Once the bars are loaded, you can switch timeframes and the indicator should adjust correctly. If not try switching timeframes again. As the bars are accessed, the indicator could do its calculations before the data is fully loaded and incomplete data will be used in the calculations. Once the data has been accessed and indexed by MT4, the indicator will function smoothly.

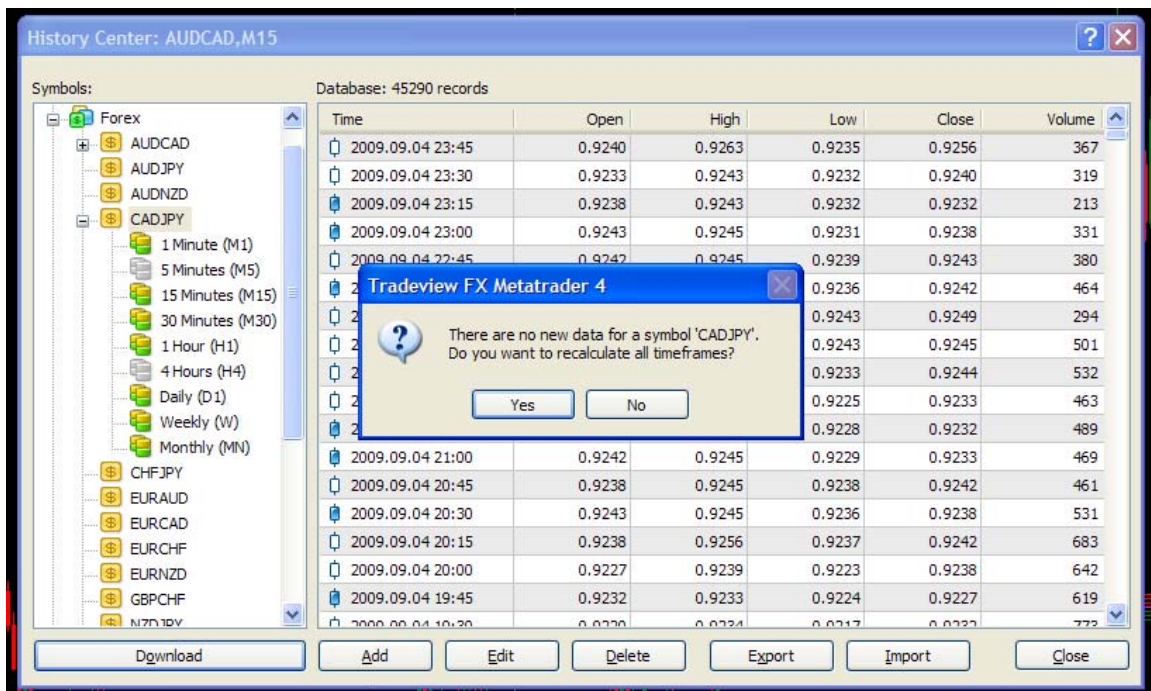
If you still have problems...

Method 3:

Press F2 and the History Center will pop-up. Select your pair and click Download in the lower left.



Hit OK and a progress bar will appear. After the data is loaded do it again. It will quickly jump to this alert.



Click yes and try the indicator again. You will still need to change timeframes a couple times to get the data indexed.

One of those methods should fix any abnormalities. If not PM me and I will see if I can figure out why.

I know this seems clunky but I cannot find any other way to get MT4 to load data. If someone knows a better way please let me know.

Again, this is only required when accessing a pair for the first time. Any pairs you watch on a regular basis should have plenty of bars loaded.

If the indicator still looks wrong, try switching timeframes until the indicator looks good. You may have to wait a few seconds while the data indexes.

Tony
Aka Tigertron