

# Quanttec Expert Advisor

## User Manual

[quant8tec@gmail.com](mailto:quant8tec@gmail.com)

## DISCLAIMER

*High Risk Warning. Quanttec Expert Advisor use martingale that carries a high level of risk, and may not be suitable for everybody. Before deciding to use the Expert Advisor you should carefully consider your trading objectives, level of experience, and risk appetite. The possibility exists that you could sustain a loss of some or all of your initial trading capital and therefore you should not trade with money that you cannot afford to lose.*

*CFTC RULE 4.41 - Hypothetical or simulated performance results have certain inherent limitations. Unlike an actual performance record, simulated results do not represent actual trading. Also, since the trades have not actually been executed, the results may have under- or over-compensated for the impact, if any, of certain market factors, such as lack of liquidity. Simulated trading programs in general are also subject to the fact that they are designed with the benefit of hindsight. No representation is being made that any account will or is likely to achieve profits or losses similar to those shown.*

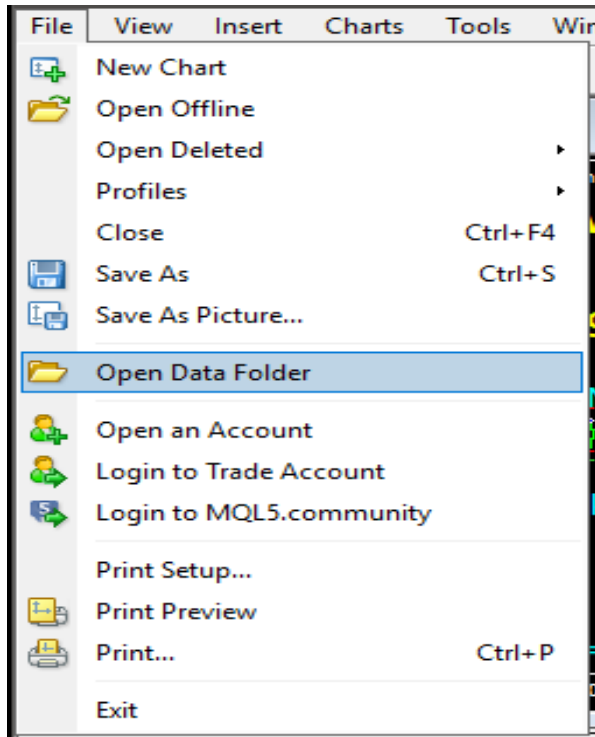
*You should be aware that trading Foreign Exchange carries a high level of risk, and you can lose some or all of your investment. The high degree of leverage that is often obtainable in forex trading, can work against you as well as for you. The use of leverage can lead to large losses as well as large gains. You must be aware of the risks and be willing to accept them in order to invest in the forex markets. Don't trade with money you can't afford to lose. We will not be liable or responsible for any loss or damage due to any reason. By using QUANTTEC EXPERT ADVISOR, you acknowledge that you are familiar with these risks and that you are solely responsible for the outcomes of your decisions. We accept no liability whatsoever for any direct or consequential loss arising from the use of this product. It's to be noted carefully in this respect, that past results are not necessarily indicative of future performance.*

# INSTALLATION

[Download Quanttec.ex4 expert advisor.](#)

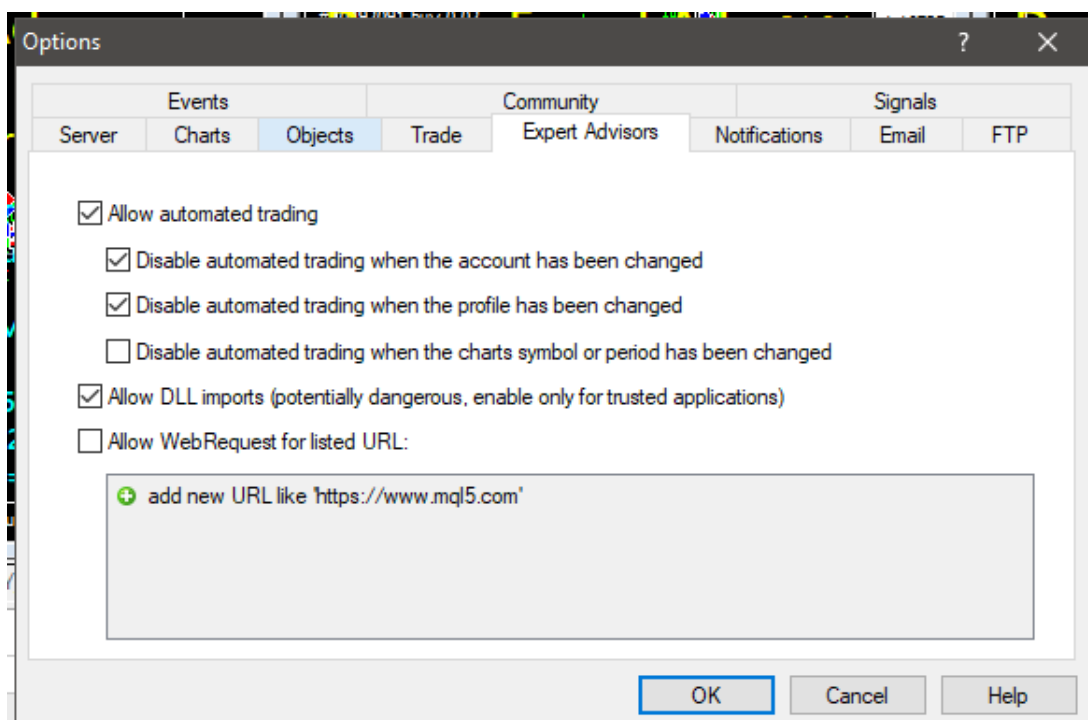
Open your MetaTrader 4.

Go to File Menu -> Open Data Folder.



Copy [Quanttec.ex4](#) to your mt4 Data Folder -> MQL4 -> Experts.

Go to Tools Menu -> Options -> Expert Advisor Tab. Check Allow Live Trading.



# EXPERT ADVISOR MANUAL

Recommended starting capital is \$5000 with leverage of 1:500. Use Cent Account if you are short of that amount ([click here to apply](#)). There are 3 combination currency models that are recommended for Quanttec EA. We personally use default setting.

- 1) EURGBP USDCHF EURCHF (low risk)
- 2) EURGBP EURCHF USDJPY (medium risk)
- 3) EURUSD EURJPY USDJPY (high risk)

Attach Quanttec to EURGBP EURCHF USDJPY on H1 time frame, with 0.01 lot size to each chart.

## Lot Sizing Rules (**Highly Important**)

\$5,000 start lot with 0.01

\$10,000 start lot with 0.02

\$20,000 start lot with 0.03

\$40,000 start lot with 0.04

\$80,000 start lot with 0.05

\$160,000 start lot with 0.06

and so on (only increase lot sizes for every 100% growth)

For Conservative trades, run Quanttec only in Sydney and Tokyo sessions. For aggressive, you can run Quanttec for 24 hours. We do recommend withdrawing Profits every week. You can compound your returns for every 100% growth and follow the Lot Sizing Rules. We personally close all trades and stop Quanttec when **RED NEWS** is coming for the day, such as international events, important people speaking, NFP, Interest Rate, etc. High Risk, High Return.

## SETTING

- Magic => Magic Number for order tracking
- Lots => Follow Lot Sizing Rules
- Distance => Distance for next open position. Aggressive trades use default setting, distance 10 pips. Conservative trades use 20 pips distance.
- Take Profit => in Pips
- Max Level Martingale => leave it as default
- Level Risk => e.g. 10, when martingale level above 10 levels, EA is not wait for TP, but will overrides the TP, when profit >\$1 Quanttec will close all orders.
- Target Equity => e.g. 10,000, Quanttec will close all order and disable activity when target equity is reach. Notification window will pop-up.
- Virtual TP => if set to TRUE; it'll hide the TP lines from broker.
- Time Filter => if set to FALSE, will automate trading for 24 hours.
- Start => 24 (broker time), if Time Filter is set to TRUE.
- End => 8 (broker time), 24 – 8 => Sydney to Tokyo sessions @ +2 GMT

## LICENCE

The license code is tied to your trading account number. Please send us your LIVE account number; we will generate your pin code for your trading account(s). Your payment includes future updates and support for the [Quanttec Expert Advisor](#).

If you have any further enquiries/questions, please don't hesitate to contact us.

Best Regards,

**Quanttec Support**

[quant8tec@gmail.com](mailto:quant8tec@gmail.com)

**No Greed Is Always Green**