

HYPER!!

Many thanks from the people at HyperTrader (<http://www.hypertrader.it/freetool.shtml>) for making this product available to us all for free, and especially to Fabrizio Armando for truly excellent support. If you have any questions I am sure that he won't mind if you ask him. He can be reached at the HyperTrader Forum (<http://forum.hypertrader.ws/>)

If you have any comment as to how I can improve on this document or any complaints / complements, etc. I can be reached at laviljoen@yahoo.com.

Check List: What you will need:

HyperServer Lite	http://www.hypertrader.it/hserverl.shtml
History Downloader	http://www.hypertrader.it/tshplugin.shtml
MetaTrader	http://www.metaquotes.net/download.htm

Omega Research ProSuite 2000i Updates <ftp://ftp.omegaresearch.com/PUB/updates/>

In this example we'll use EURUSD

1. Download and install MetaTrader.
2. Open demo account for MetaTrader.

Alpari is often used, some time back there was some problems with their feeds, so here's additional servers,

Some users found that uninstalling and then installing a new demo account helps get the feed running again.

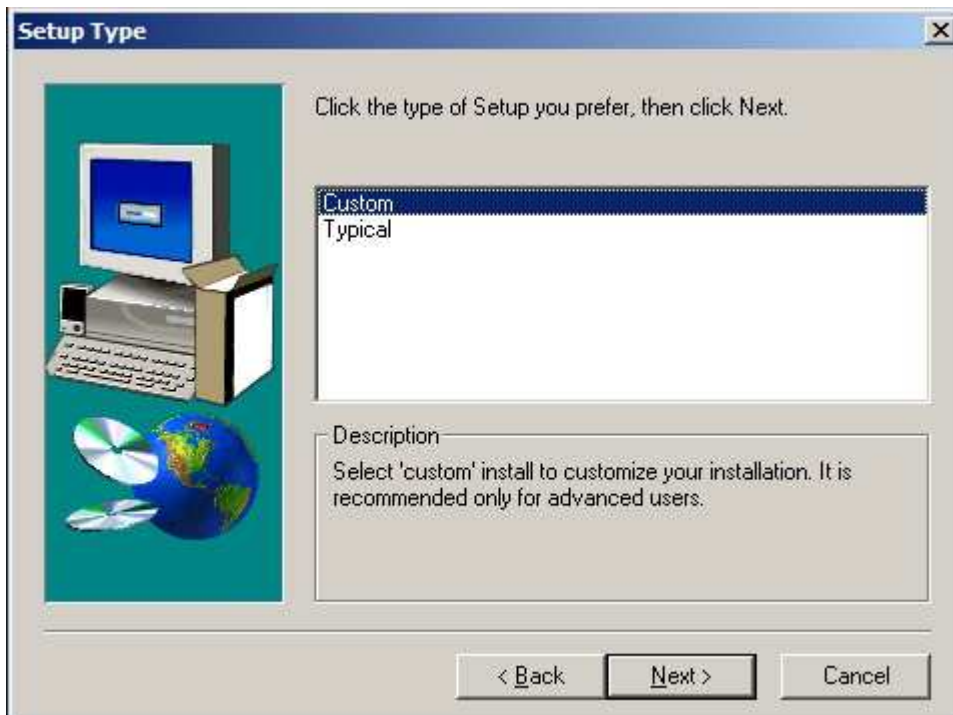
Real 1952;
217.74.32.254:1952
213.85.31.254:1952
195.2.82.152:1952

Demo 1950
217.74.32.254:1950
213.85.31.254:1950
195.2.82.152:1950 (thanks to Wallace from moneytec.com)

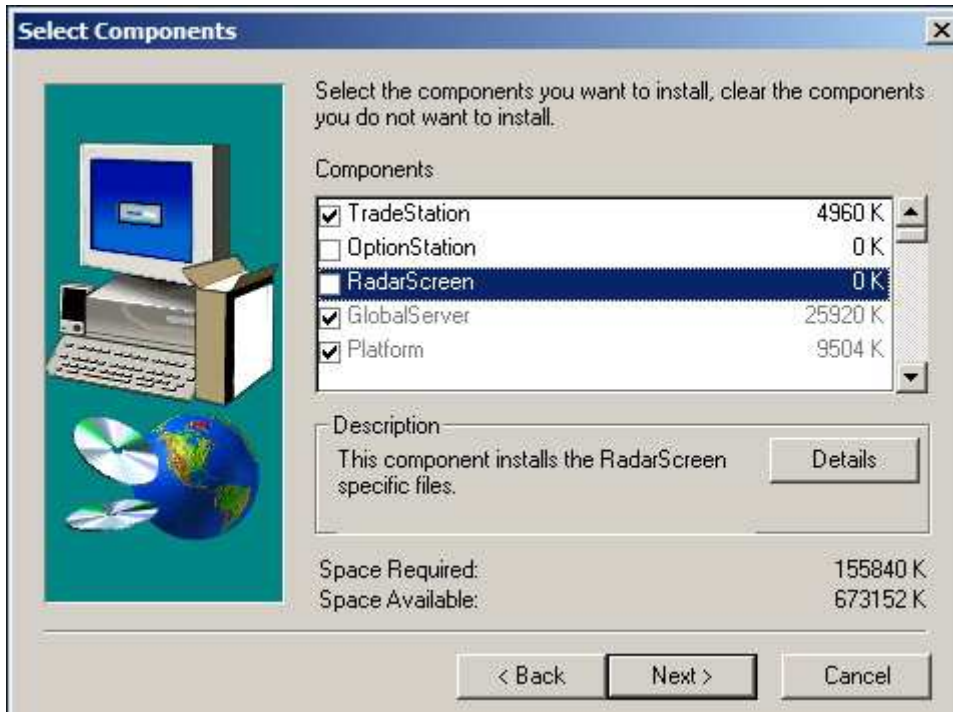
3. Check data feed in MetaTrader on 1min data to see if the data is streaming once you have MetaTrader up and running,

It is now time to install TradeStation 2000i

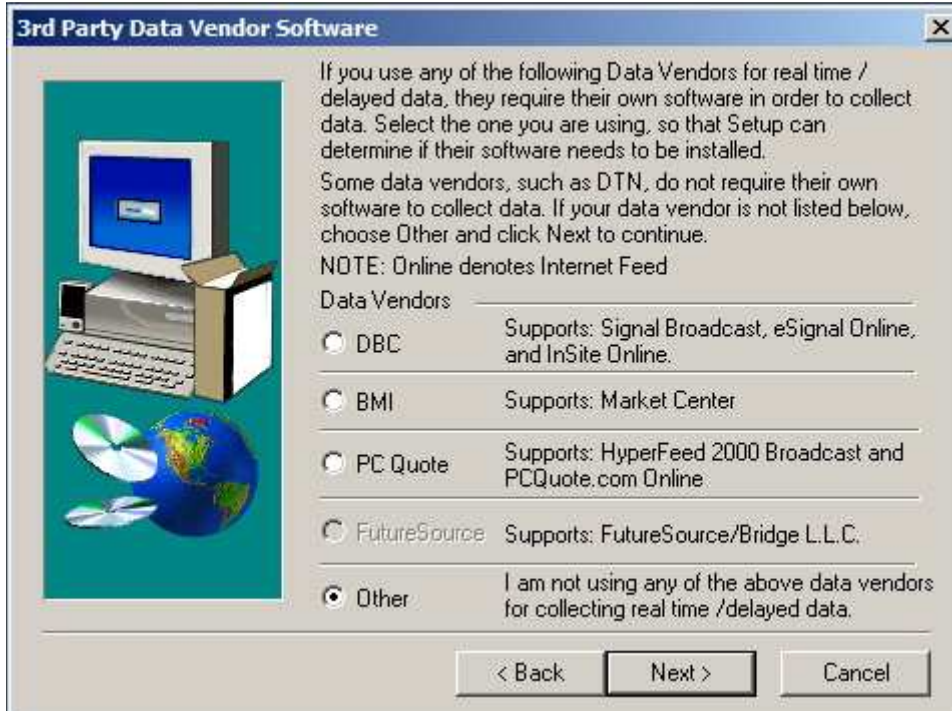
Under the 'Setup Type' menu select 'Custom',



Then at 'select components' deselect "OptionStation" and "RadarScreen" (You won't need them),



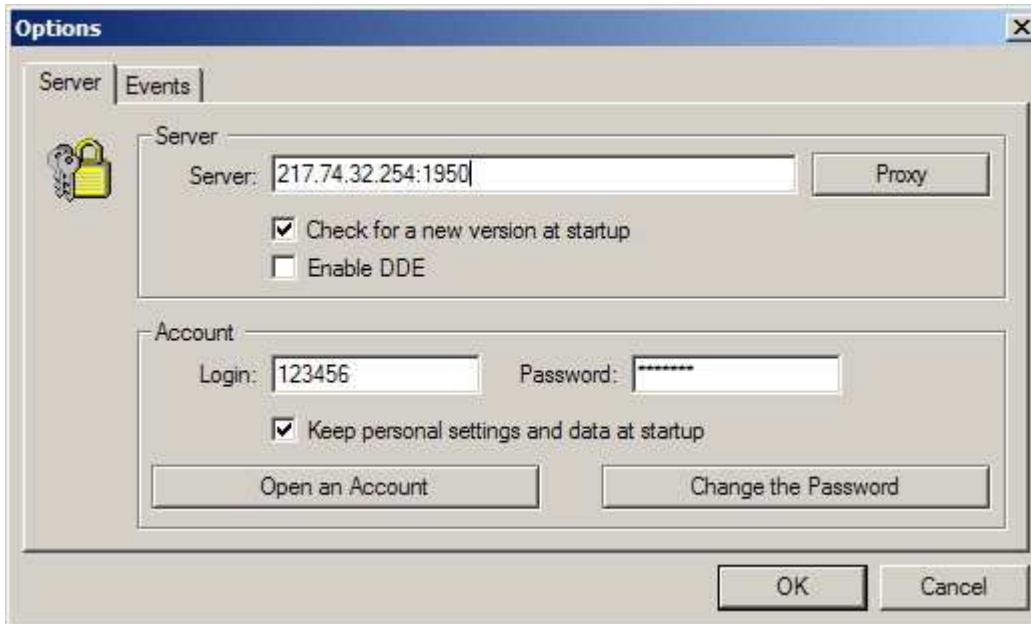
At '3rd party data vendor software' select 'other'



Once finished with the installation, you'll have to install the service packs (4c and 5) to bring the version of TradeStation to 5.0.0.822; if you already have ver. 822 then obviously it won't be necessary ☺

Restart PC

Next in line for installation is “HyperServer Lite Omega2000 Edition for MetaTrader”. Installation of HyperServer is pretty simple, just click your way through, and register the software (free). Once registered the only thing that you have to setup here is your data feed. Click on ‘Console Root’ and then ‘Data Feed’ Right click on MetaTrader and then click on Properties. Make sure that you have the same details as in MetaTrader (Tools/Options/Server tab)



Options window as in MetaTrader

Data Feed Properties [?] [X]

General | **Data Feed**

CONNECTION

Server	217.74.32.254
Port	1950
Login	123456
Password	password

SYMBOL

Middle Price for Currency	No
---------------------------	----

OK Cancel Apply Help

Data feed window in HyperServer Lite

Press OK.

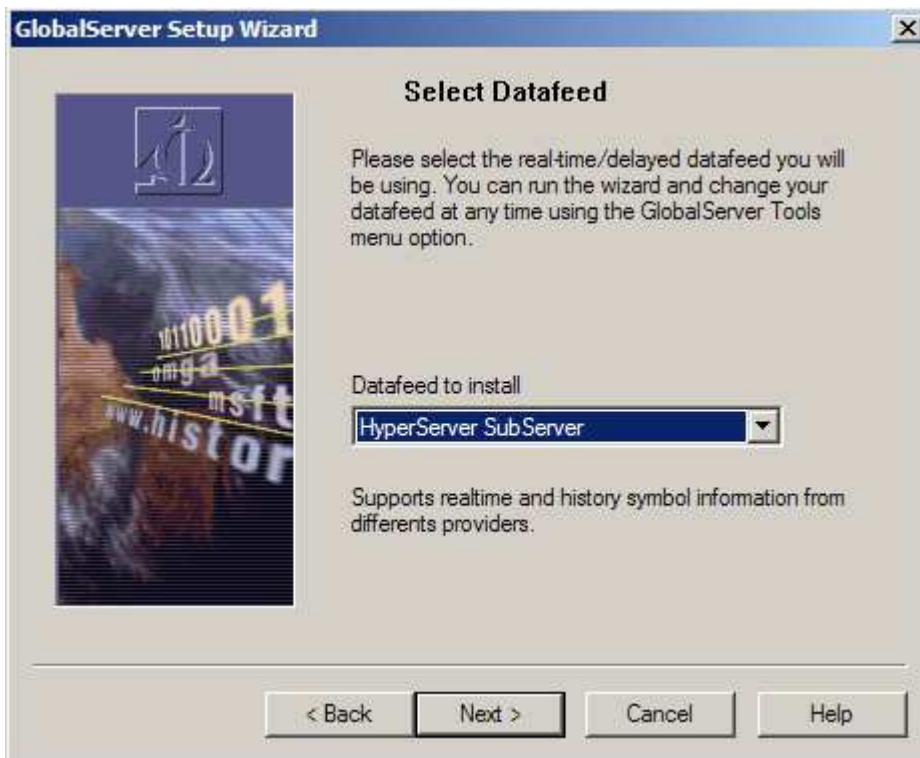
Start GlobalServer. (Start online) File/Work Online

Upon launching GlobalServer for the first time, you will be presented with the 'setup wizard' If you've had ProSuite installed previously you'll have to go to Tools menu, and the Run Setup Wizard,

On the 'data collection method' panel, select "Real-time / Delayed"



On the 'select data feed' panel select HyperServer SubServer.



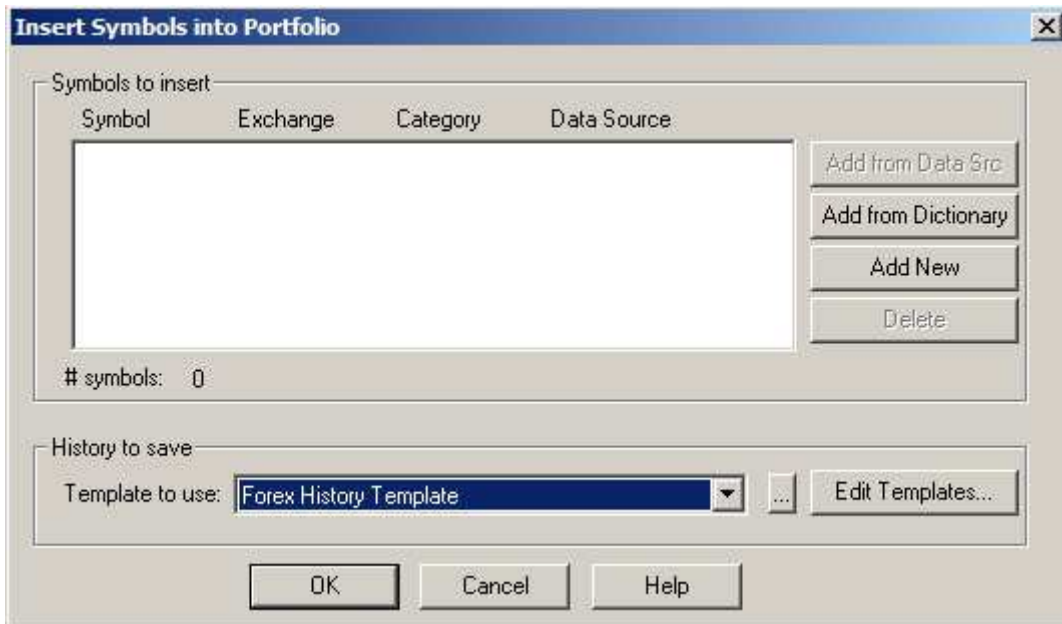
Once that is finished, global server will launch and ask if you want to start online or offline, select 'start online' and the click on don't prompt me again.

Now this is where the fun starts... ☺

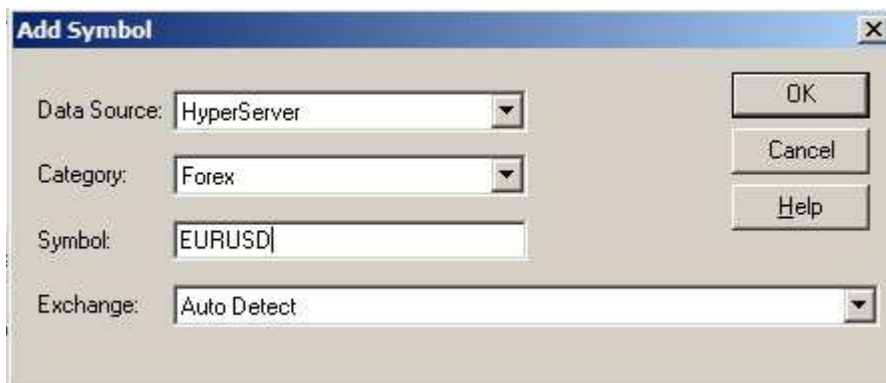
You now have to create a symbol(s) for which you want to get data from MetaTrader.

This is how you do it:

Go to Insert menu, click on 'symbol...' under 'History to save' select the 'template to use' as Forex History Template.



Then click on Add New, enter EURUSD in the symbol field,



Click ok, and now the program will ask for additional information, click ok, and in the 'Forex' tab under 'symbol root' enter EURUSD,

Add Forex [X]

Forex | Settings | Sessions | Option Roots

Data Source: HyperServer

Symbol Name: EURUSD

Description:

Symbol Root: EURUSD

Symbol Number: 0

OK Cancel Apply Help

Settings tab, select the 'Exchange Listed' as CFOREX and accept the default settings.
(Some versions of 2000i will have a FOREX option; use that if yours has it)

The image shows a screenshot of the 'Add Forex' dialog box, specifically the 'Settings' tab. The dialog box has a title bar with the text 'Add Forex' and a close button. Below the title bar are four tabs: 'Forex', 'Settings', 'Sessions', and 'Option Roots'. The 'Settings' tab is currently selected. The main area of the dialog contains five labeled fields: 'Exchange Listed:', 'Price Scale:', 'Point Value:', 'Daily Limit:', and 'Min. Movement:'. The 'Exchange Listed' field is a dropdown menu showing 'CFOREX - Crossmar Foreign Exchange'. The 'Price Scale' field is a dropdown menu showing '1/10000'. The 'Point Value' field is a text box containing '10.000000'. The 'Daily Limit' field is a text box containing '0'. The 'Min. Movement' field is a text box containing '1.000000'. At the bottom of the dialog are four buttons: 'OK', 'Cancel', 'Apply', and 'Help'.

Field	Value
Exchange Listed:	CFOREX - Crossmar Foreign Exchange
Price Scale:	1/10000
Point Value:	10.000000
Daily Limit:	0
Min. Movement:	1.000000

On the 'Sessions' tab it is important that your sessions is defined from 0:01 to 23:58.

EURUSD - Edit Symbol

Forex | Settings | Sessions | History to save | Edit Data

Open	Time	Close	Time	Reset	Dribble	Settlement
Mon	0 :01	Mon	23:58	<input checked="" type="checkbox"/>	0 hrs 0 min	0 hrs 0 min
Tue	0 :01	Tue	23:58	<input checked="" type="checkbox"/>	0 hrs 0 min	0 hrs 0 min
Wed	0 :01	Wed	23:58	<input checked="" type="checkbox"/>	0 hrs 0 min	0 hrs 0 min
Thu	0 :01	Thu	23:58	<input checked="" type="checkbox"/>	0 hrs 0 min	0 hrs 0 min
Fri	0 :01	Fri	23:58	<input checked="" type="checkbox"/>	0 hrs 0 min	0 hrs 0 min

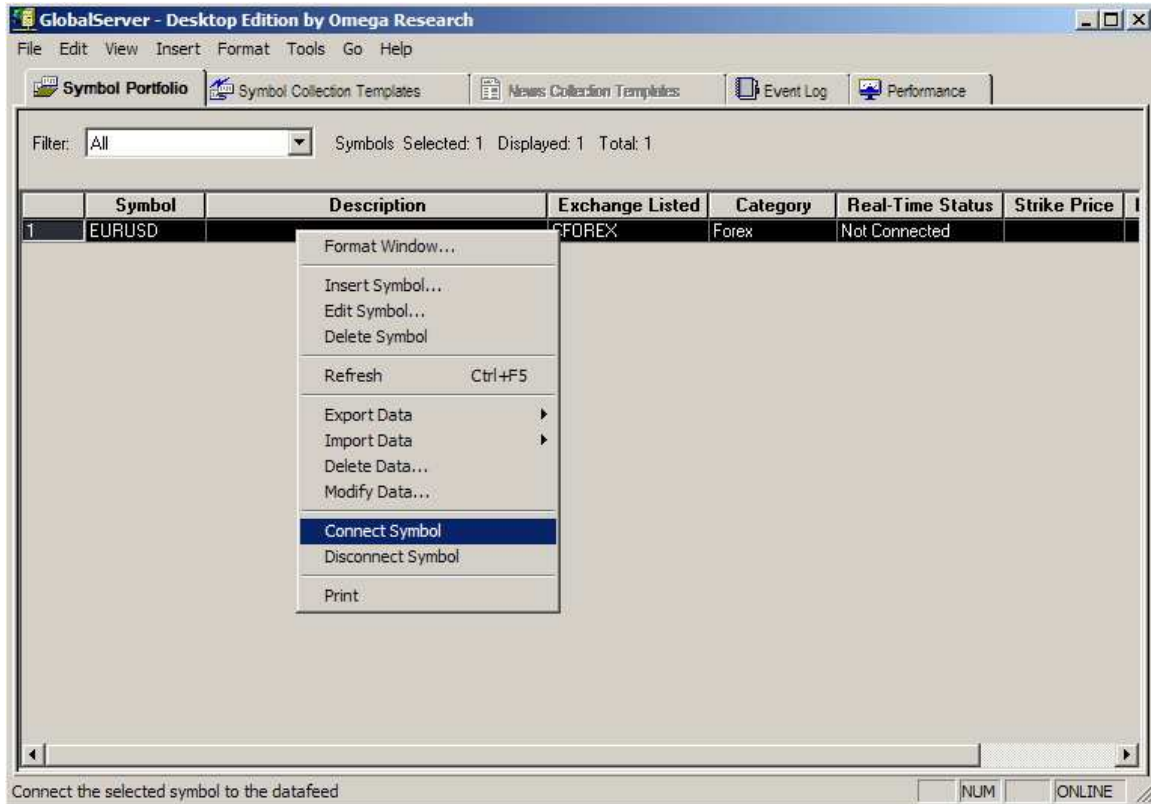
Add
Insert
Delete

Display Session Times in: Exchange Traded Time

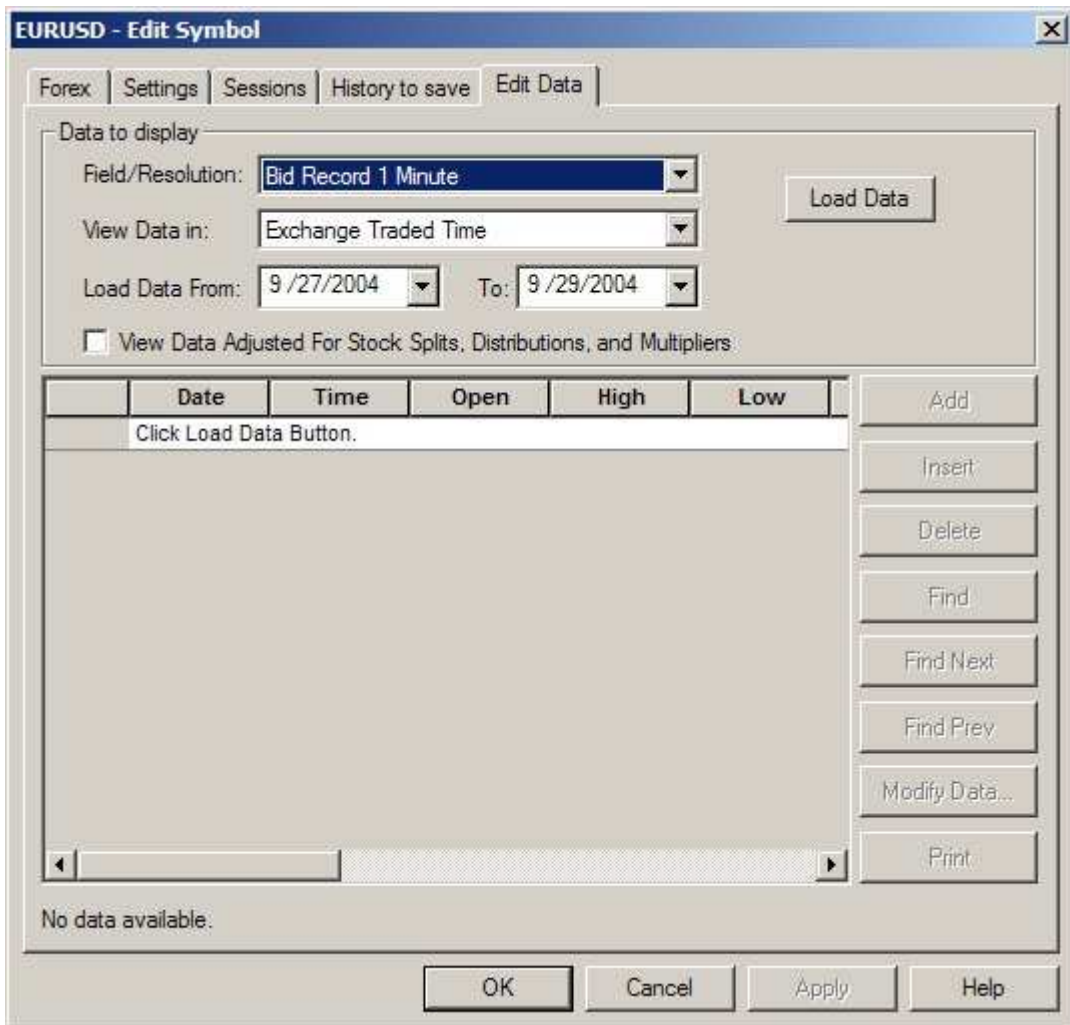
OK Cancel Apply Help

That's it. You are ready to roll....

Right click on your newly created symbol



And select 'connect symbol' Double click on the symbol and go to the 'edit data' tab in the 'field/resolution' field select 'bid record 1 minute', and click on Load Data.



Your data should load now, you can go back to HyperServer and click on ‘Real-Time monitor’ you should now see your symbol there, with its data.

Lastly, to load history data, close HyperServer Lite and GlobalServer install the “Historical Plug-in for TradeStation2000 and MetaTrader” restart GlobalServer, and under the File menu, select ‘start history download’. That’s it. You can check the data coming in by again double clicking on the symbol, and clicking on ‘edit data’, you should now see the data loading.