

Agreement: Free to use, free to share. Not ok to sell.

Installation

- RadioTower Lite 1.0
- Feb10v66d_fx_1.1

Allow web request for FFCAL

FFCAL = Forexfactory Calendar, it is XML file update weekly by forexfactory.com for economic calendar.

The url address is http://www.forexfactory.com/ffcal_week_this.xml

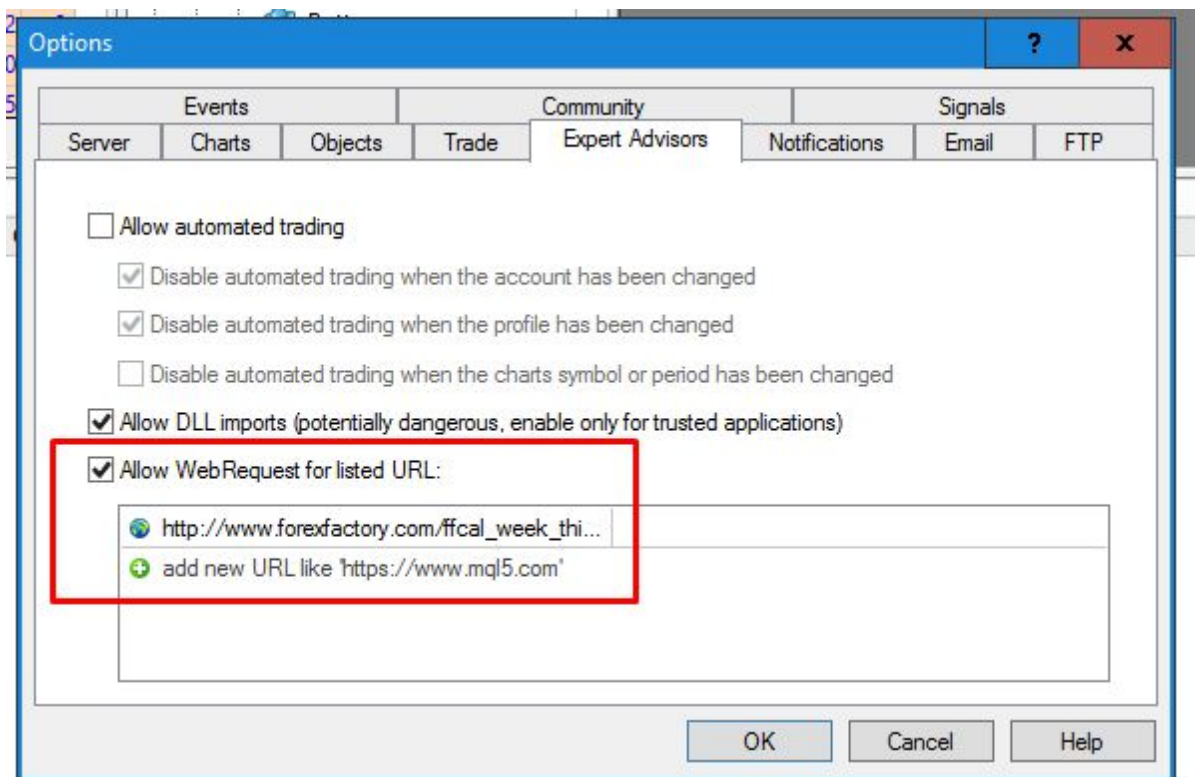
To Enable this on MT4 you must goto menu

Tools>Option

Under Expert Advisors Tab

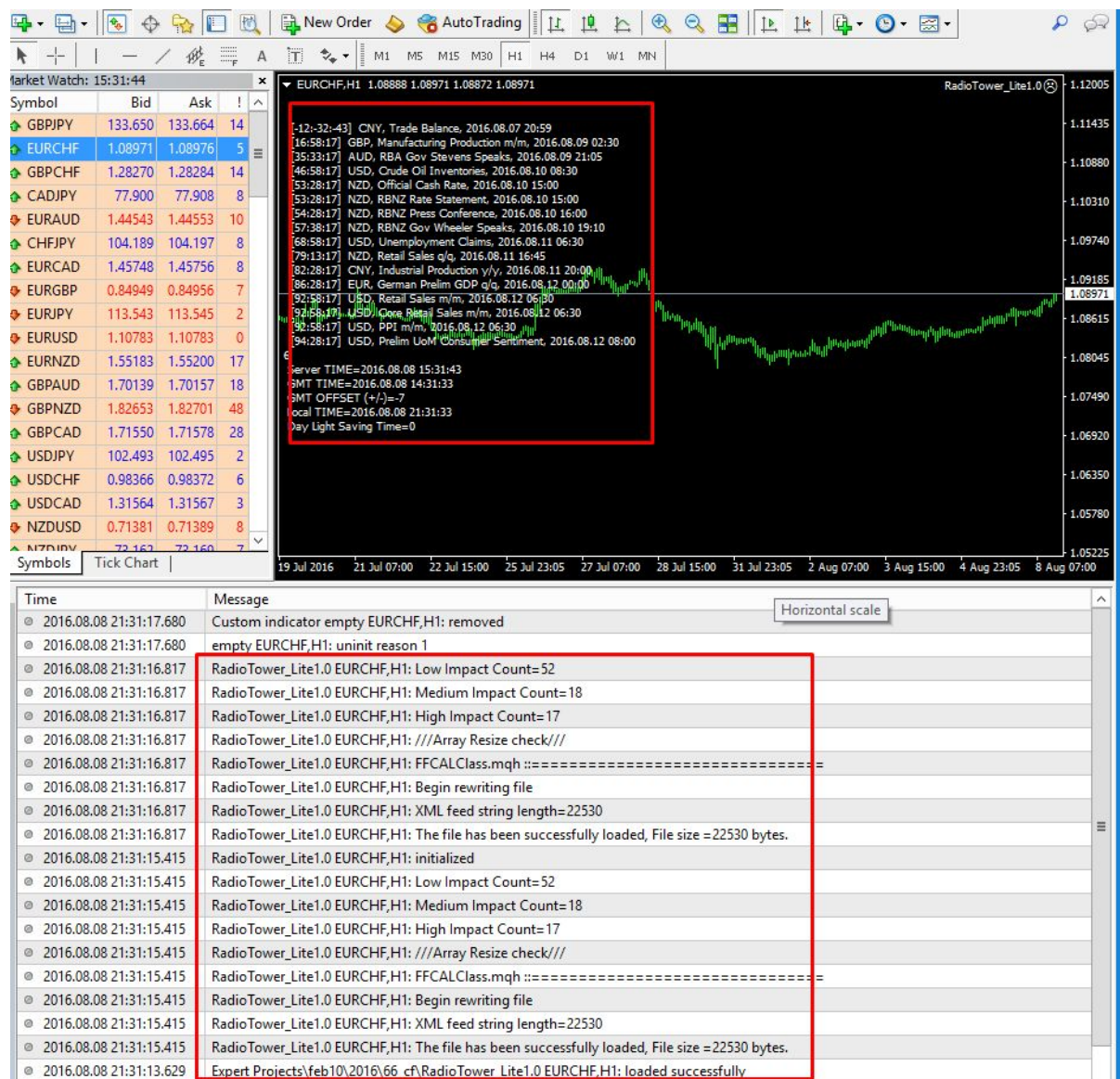
Tick Allow WebRequest for listed URL:

Then insert above ffc al url.



Load RadioTower Lite 1.0

Drag and drop on any chart and it must looks like following picture.



Hit F3 to check the GlobalVariables List

RadioTower is just an ea running news fetching script in real time. Then it translate news event into time slot. Where it hard coded for 6 hours before and 4 hours after high impact news. THis time slot will equal to "0" for the global variable and "1" is for time outside the controlled time slot.

0→ Feb10 Ea will not enter trade, but trailing and recovery still active

1→ Feb10 Ea will look for entry and will enter the trade as usual. Trailing and recovery still active

.552021.5522422

5

Server TIME=2016.08.08 15:33:20

Global Variables

?

X

Variable	Value	Time
123 FFCAL_Filter_AUD	1	2016.08.08 21:31:15
123 FFCAL_Filter_CAD	1	2016.08.08 21:31:15
123 FFCAL_Filter_CHF	1	2016.08.08 21:31:15
123 FFCAL_Filter_EUR	1	2016.08.08 21:31:15
123 FFCAL_Filter_GBP	1	2016.08.08 21:31:15
123 FFCAL_Filter_JPY	1	2016.08.08 21:31:15
123 FFCAL_Filter_NZD	1	2016.08.08 21:31:15
123 FFCAL_Filter_USD	0	2016.08.08 21:31:15
123 PWDBSIGNAL_	-99	2016.08.07 22:30:27
123 PWDBSIGNAL_AUDCAD	-99	2016.08.07 22:34:01
123 PWDBSIGNAL_AUDCHF	-99	2016.08.07 22:34:01
123 PWDBSIGNAL_AUDJPY	-99	2016.08.07 22:34:01
123 PWDBSIGNAL_AUDNZD	-99	2016.08.07 22:34:01
123 PWDBSIGNAL_AUDUSD	-99	2016.08.07 22:34:01
123 PWDBSIGNAL_CADCHF	-99	2016.08.07 22:34:01

Add

Delete

Close

Feb10 EA

simple just drag and drop or execute on chart.

This version I recommend exponent to 2.00 (double lot each order after entry trade) and set max live pairs to only 4 pairs. This is risk control.

How many pair you would like to load is upto you. Each pair news filter will be fetched from global variables, which update in real time from RadioTower.

The screenshot displays a trading software interface with the following components:

- Watch List:** A table of currency pairs with their current bid and ask prices. The pairs listed include JPY, RCHF, PCHF, DJPY, RAUD, FJPY, RCAD, RGBP, RJPY, RUSD, RNZD, IPAUD, IPNZD, IPCAD, DJPY, DCHF, DCAD, and DUSD.
- Chart:** A candlestick chart for the EURCHF, H1 timeframe, showing price movement from July 19, 2016, to July 22, 2016.
- Expert Advisor Configuration Window:** A dialog box titled "Expert - Feb10v66d_fx_1.1" with an "Inputs" tab. It contains a table of variables and their values, with red arrows indicating recommended changes.

Variable	Value
init_lot_size	0.01
exponent	1.44 → 2.0
maximum_live_pais	6 → 4-8

Buttons at the bottom of the configuration window include "Load", "Save", "OK", "Cancel", and "Reset".

Below the configuration window, a message log shows the following entries:

- 2016.08.08 21:36:19.040 Custom indicator empty GBPCHF, H1: ...
- 2016.08.08 21:36:19.038 empty GBPCHF, H1: uninit reason 1
- 2016.08.08 21:36:13.502 Feb10v66d_fx_1.1 GBPCHF, H1: initialized
- 2016.08.08 21:36:13.502 Feb10v66d_fx_1.1 GBPCHF, H1: v66cf: You are running with 5 digit broker server.
- 2016.08.08 21:36:13.448 Feb10v66d_fx_1.1 GBPCHF, H1 inputs: init_lot_size=0.01; exponent=1.44; maximum_live_pais=6;
- 2016.08.08 21:36:12.229 Expert Projects\feb10\2016\66_cf\Feb10v66d_fx_1.1 GBPCHF, H1: loaded successfully
- 2016.08.08 21:36:08.127 empty GBPCHF, H1: initialized

Entry Rule

Buy Order

```
double haopen0=iCustom(Symbol(),1440,"Heiken Ashi",2,0);
double haopen1=iCustom(Symbol(),1440,"Heiken Ashi",2,1);
status("HAO 0="+DoubleToString(haopen0)+" HAO 1="+DoubleToString(haopen1));
//entry #entries
if(IsNoPosition() && TimeCurrent()>timestamp_close+HoldMinutes*60)
{
    //-----trigger trade buy
    if(CandleRange(5)>Calm_range*Point)
    {
        expect_stoploss=0;
        if(TimeCurrent()>BlockBuyUntilTime)
        {
            double px1=PercentileSafetyLevel(OP_SELL,240);
            double px2=PercentileSafetyLevel(OP_SELL,7);
            if(px1>50 && px2>80)
            {
                //if(iClose(Symbol(),PERIOD_M1,1)>HP(3))

                if(Bid<LP(3))
                {
                    if(Bid>iLow(Symbol(),1440,1))
                    {
                        if(HP(5)-Bid<2*iStdDev(Symbol(),0,20,0,MODE_EMA,PRICE_CLOSE,2))
                        {
                            lastticket=Trade_Market(OP_SELL,timestamp_sell,init_lot_size,expect_stoploss,Bid-100*Point,"MSf");
                        }
                    }
                    else
                    {
                        lastticket=Trade_Market(OP_BUY,timestamp_buy,init_lot_size,expect_stoploss,Ask+100*Point,"MB");
                    }
                }
            }
        }
        else
        {
            //if(haopen0<haopen1)

            //lastticket=Trade_Market(OP_SELL,timestamp_sell,init_lot_size,expect_stoploss,Bid-100*Point,"MSx");
        }
    }
}
```

Sell Order

```
//-----trigger trade sell
if(CandleRange(5)>Calm_range*Point)
{
    expect_stoploss=0;
    if(TimeCurrent()>BlockSellUntilTime)
    {
        double px1=PercentileSafetyLevel(OP_BUY,240);
        double px2=PercentileSafetyLevel(OP_BUY,7);

        if(px1>50 && px2>80)
        {
            //if(iClose(Symbol(),PERIOD_M1,1)<LP(3))
            if(Ask>HP(3))
            {
                if(Ask<iHigh(Symbol(),1440,1))
                {
                    if(Bid-LP(5)<2*iStdDev(Symbol(),0,20,0,MODE_EMA,PRICE_CLOSE,2))
                    {
                        lastticket=Trade_Market(OP_BUY,timestamp_buy,init_lot_size,expect_stoploss,Ask+100*Point,"MBf");
                    }
                }
                else
                {
                    lastticket=Trade_Market(OP_SELL,timestamp_sell,init_lot_size,expect_stoploss,Bid-100*Point,"MS");
                }
            }
        }
        else
        {
            //if(haopen0>haopen1)
            //lastticket=Trade_Market(OP_BUY,timestamp_buy,init_lot_size,expect_stoploss,Ask+100*Point,"MBx");
        }
    }
}
```