



A research production of Henry KH ANG.

HA Research

CURRENCY FUNDAMENTAL QUANTIFIED.



CURRENCY REPORT.

All materials provided in this report should not constitute to any direct or indirect trading signals or decisions. Information provided should only be available to subscribed personnel of HA Research.



CONTACTS:

Henry KH ANG
Henry.KH.Ang@live.com

Singapore

SUBSCRIPTION:

To subscribe to the FREE daily currency report of your choice. [Click Here.](#)

(Currency available: AUD, NZD, CAD, CNY, USD, JPY, GBP, EUR and All Currencies Summary)



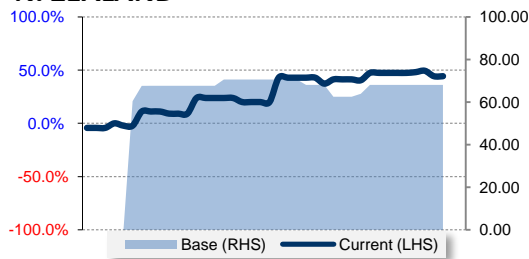


NEW ZEALAND ECONOMY

In a glance.

02-Dec-2013 (Monday)

Last Updated: 09:29AM (GMT +0800)

**Figure 1: Fundamental Strength Index for last 40 days.****N. ZEALAND** (40 Days Fundamental Strength)

* HOW TO USE THESE? - see footnote on Fundamental Strengths.

BASE SUMMARY:

INFLATION INDICATORS :	12.5	/ 22.2
GROWTH INDICATORS :	12.5	/ 27.8
EMPLOYMENT INDICATORS :	11.1	/ 11.1
HOUSING INDICATORS :	8.3	/ 11.1
BUSINESS SURVEY :	18.1	/ 22.2
CONSUMER SURVEY :	5.6	/ 5.6
BASE STRENGTH :	BULLISH	68.06 / 100
SHORT-TERM STRENGTH :	BULLISH	44.30%

NEW ZEALAND DOLLAR (NZ\$) STRONG (RATE HIKE POTENTIAL)

New Zealand Fundamentals Very Strong (68.06/100); Recent momentum STILL BULLISH at 44.30%.

(Fig2.1) NZ inflation in recovery, but within the low of RBNZ 1%-3% target.(Fig2.2) Producer costs increase, going strong.(Fig2.3) Purchasing power of NZ Exports increases.(Fig2.4) Labour cost remains flattish, weak. No inflationary risk.(Fig2.5) NZ GDP keeps growth trend.(Fig2.6) Domestic retail sales weakens , but still neutral.(Fig3.1) International trade in cyclical recovery.(Fig3.2) Balance of Payment posting recovery.(Fig3.3) Jobless rate low at 6.20%(Fig3.4) NZ Job gains strong in 2013.(Fig3.5) Real estate price in NZ grows(Fig3.6) New building approvals stable.(Fig4.1) Manufacturing PMI continued in expansion.(Fig4.2) Relative outlook of economy strong.(Fig4.3) Relative 1 year outlook of NZ is buoyant.(Fig4.4) Inflation expectation low, but could rise.(Fig4.5) NZ consumers optimistic about economy.

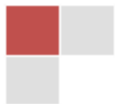
Conclusion: New Zealand economy is stronger and rate hike is imminent, all aspects continued to improve. Trade balance is in cyclical recovery.

Table 1: Pending Fundamental Events for New Zealand & Past 15 economic data release.

UPCOMING FUNDAMENTAL EVENTS						
DATE	TIME	DETAILS	FORECAST	PREVIOUS	IMPACT	
03-Dec Tuesday	8:00am	ANZ Commodity Prices m/m	-	1.30%	!	
PAST ECONOMIC EVENTS:						
DATE	TIME	DETAILS	ACTUAL	FORECAST	PREVIOUS	
28-Nov Thursday	9:00am	ANZ Business Confidence	60.50	-	53.20	↑
26-Nov Tuesday	6:45am	Trade Balance	-168.00	-345.00	-216.00	↑
22-Nov Friday	6:45am	Visitor Arrivals m/m	-2.10%	-	-1.10%	↓
20-Nov Wednesday	6:45am	PPI Input q/q	2.20%	0.60%	0.60%	↑
20-Nov Wednesday	6:45am	PPI Output q/q	2.40%	1.00%	1.00%	→
19-Nov Tuesday	11:03am	Inflation Expectations q/q	2.30%	-	2.40%	↑
14-Nov Thursday	6:30am	Business NZ Manufacturing Index	55.70	-	54.20	↑
14-Nov Thursday	6:45am	Retail Sales q/q	0.30%	0.90%	1.50%	→
14-Nov Thursday	6:45am	Core Retail Sales q/q	-0.10%	1.40%	2.10%	→
13-Nov Wednesday	6:45am	FPI m/m	-1.00%	-	0.00%	↓
12-Nov Tuesday	5:45am	REINZ HPI m/m	1.60%	-	0.80%	→
06-Nov Wednesday	6:45am	Employment Change q/q	1.20%	0.50%	0.40%	↑
06-Nov Wednesday	6:45am	Unemployment Rate	6.20%	6.20%	6.40%	↑
06-Nov Wednesday	6:45am	Labor Cost Index q/q	0.40%	0.50%	0.40%	↓
04-Nov Monday	9:00am	ANZ Commodity Prices m/m	1.30%	-	1.00%	→

Quantified Fundamental Strengths are consolidated and Paired (i.e: CCY/CCY) to generate Auto-Suggested Trades in **Summary Report**.
Auto-suggested trades are automatically paired on the basis of Strongest Currency Fundamental against Weakest Currency Fundamentals.

For disclaimer & more information on the calculation methodology, please refer to the back cover of this document.

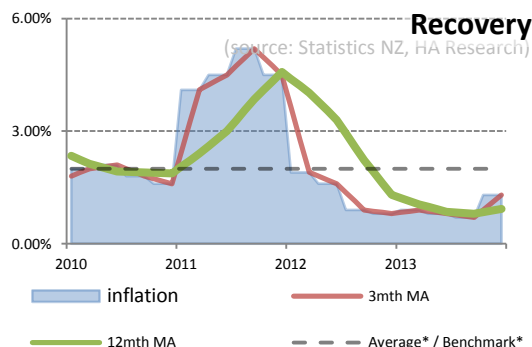


New Zealand Currency Report

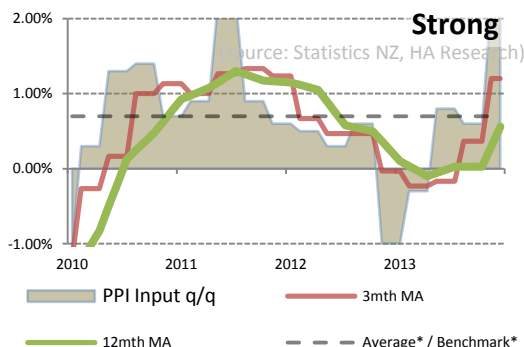
INFLATION INDICATORS



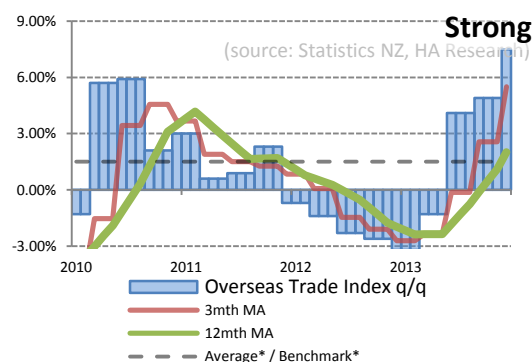
(Fig2.1) NZ inflation in recovery, but within the low of RNBZ 1%-3% target.



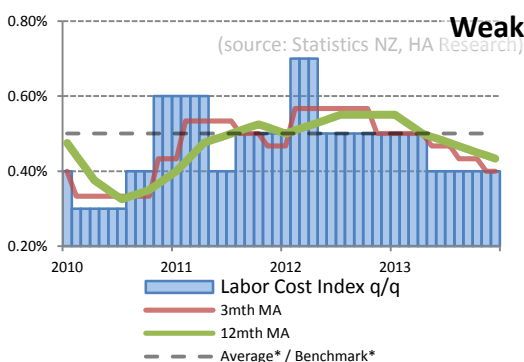
(Fig2.2) Producer costs increase, going strong.



(Fig2.3) Purchasing power of NZ Exports increases.

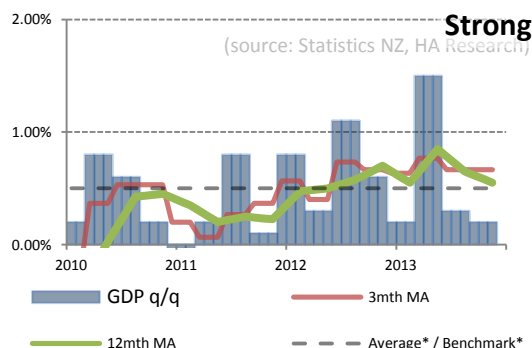


(Fig2.4) Labour cost remains flattish, weak. No inflationary risk.

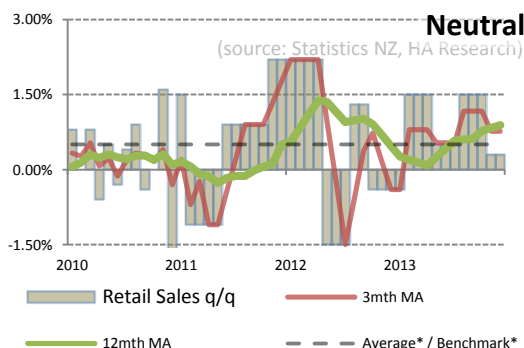


GROWTH INDICATORS

(Fig2.5) NZ GDP keeps growth trend.



(Fig2.6) Domestic retail sales weakens , but still neutral.



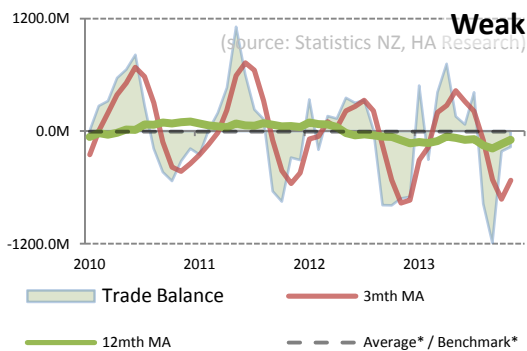
Average* / Benchmark* is a derivation of the following considerations: (1) moving averages across data used in the chart period; (2) Mandated target of Central Bank; (3) Market consensus benchmark; (4) Combination of either.

Figure/Chart annotations All figures/charts provided in this report are annotated in Figure(Page).(Chart #) format. Example Figure2.1 represents: Figure in (Page 2).(Chart 1 in page 2).

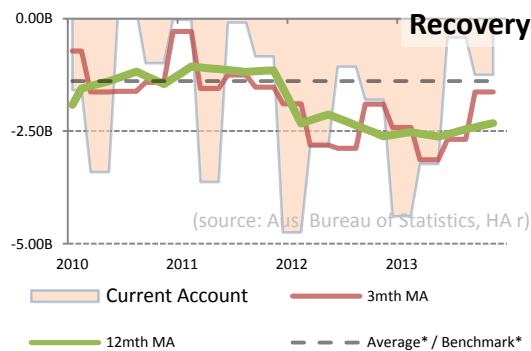


GROWTH INDICATORS (continued)

(Fig3.1) International trade in cyclical recovery.

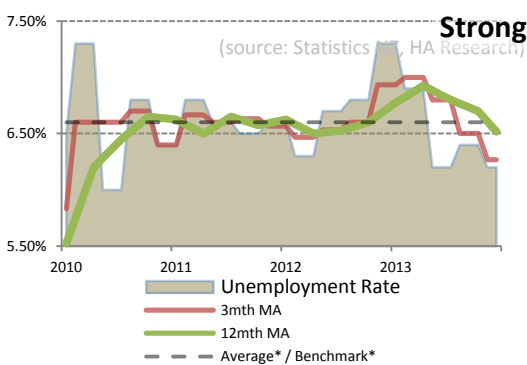


(Fig3.2) Balance of Payment posting recovery.

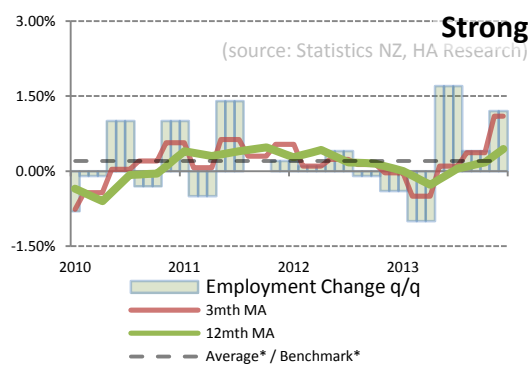


EMPLOYMENT INDICATORS

(Fig3.3) Jobless rate low at 6.20%

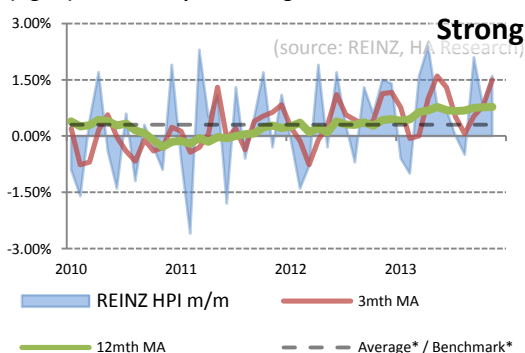


(Fig3.4) NZ Job gains strong in 2013.

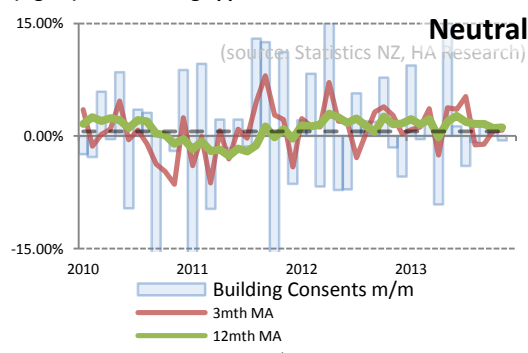


HOUSING INDICATORS

(Fig3.5) Real estate price in NZ grows



(Fig3.6) New building approvals stable.



Average* / Benchmark* is a derivation of the following considerations: (1) moving averages across data used in the chart period; (2) Mandated target of Central Bank; (3) Market consensus benchmark; (4) Combination of either.

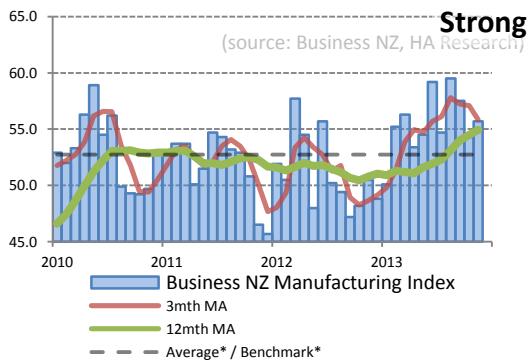
Figure/Chart annotations All figures/charts provided in this report are annotated in Figure(Page).(Chart #) format. Example Figure2.1 represents: Figure in (Page 2).(Chart 1 in page 2).



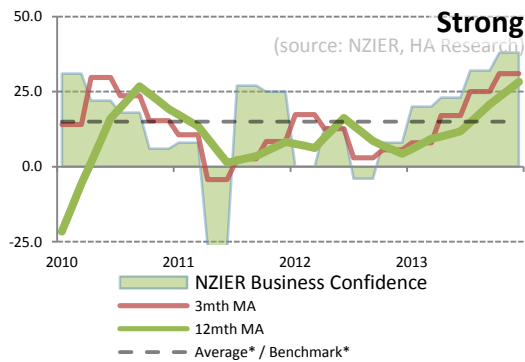
BUSINESS SURVEY



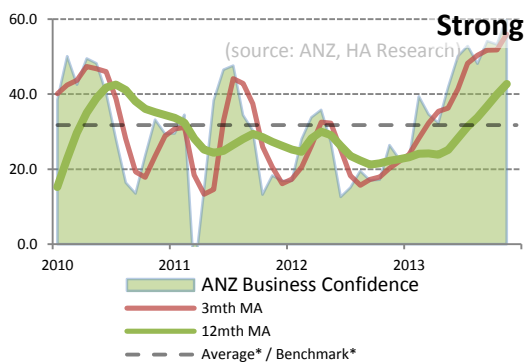
(Fig4.1) Manufacturing PMI continued in expansion.



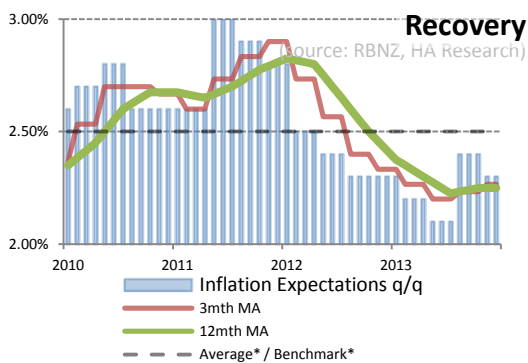
(Fig4.2) Relative outlook of economy strong.



(Fig4.3) Relative 1 year outlook of NZ is buoyant.

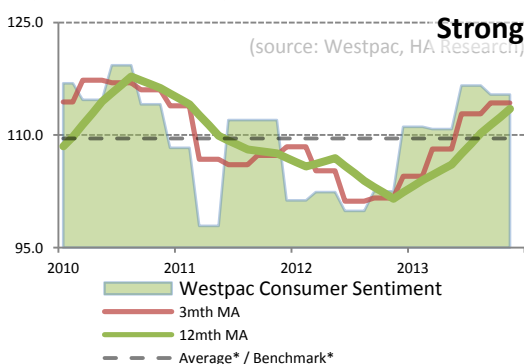


(Fig4.4) Inflation expectation low, but could rise.



CONSUMER SURVEY

(Fig4.5) NZ consumers optimistic about economy.



Average* / Benchmark* is a derivation of the following considerations: (1) moving averages across data used in the chart period; (2) Mandated target of Central Bank; (3) Market consensus benchmark; (4) Combination of either.

Figure/Chart annotations All figures/charts provided in this report are annotated in Figure(Page).(Chart #) format. Example Figure2.1 represents: Figure in (Page 2).(Chart 1 in page 2).



About the Reports.

Fundamental Analysis, though not the only direct determinant of Forex Spot Trading, is still significant and cannot be ignored undeniably. The author believes quantifying fundamentals strength of currency into 1 single index score helps in maintaining the overview of the currency, and therefore enhancing traders' overall trading system consisting of other tools, such as Technical Analysis, Price action or events driven risk movements...etc.

The reports are updated and published on a daily basis, on 8 currencies namely: AUD, NZD, CAD, CNY, EUR, GBP & USD. From which, each individual Quantified Currency Strengths are consolidated into the Summary Report. Further on the basis of pairing Strongest Fundamentals of Currency against Weakest Fundamentals of Currency, auto-suggested trades are then generated based on these allocated fundamental strengths of currency.

DISCLAIMER

THE INFORMATION, SOURCE AND DATA CONTAINED IN THIS DOCUMENT HAS NOT BEEN EXTERNALLY VERIFIED AND NO REPRESENTATION OR WARRANTY EXPRESSED OR IMPLIED IS MADE AS TO, AND NO RELIANCE SHOULD BE PLACED ON, THE FAIRNESS, ACCURACY, COMPLETENESS OR CORRECTNESS OF THIS INFORMATION OR OPINIONS CONTAINED HEREIN.

THIS DOCUMENT DOES NOT CONSTITUTE AN OFFER NOR SHALL IT FORM THE BASIS OF OR BE RELIED UPON IN CONNECTION WITH ANY CONTRACT, TRADE OR COMMITMENT WHATSOEVER. REFERENCE TO DATA IN THIS DOCUMENT ARE PROVIDED "AS IS" WITHOUT WARRANTY OF ANY KIND, EITHER EXPRESS OR IMPLIED. IN NO EVENT SHALL THE AUTHOR (Henry KH ANG) BE LIABLE FOR ANY SPECIAL, INCIDENTAL, INDIRECT OR CONSEQUENTIAL DAMAGES OF ANY KIND, OR ANY DAMAGE WHATSOEVER, INCLUDING, WITHOUT LIMITATION, THOSE RESULTING FROM THE USE OF DATA IN THIS DOCUMENT.

THE INFORMATION PRESENTED IN THIS DOCUMENT IS PUBLISHED SEMI-AUTOMATICALLY AND ITS ACCURACY OR TIMELINESS CANNOT BE GUARANTEED. USER OF THIS DOCUMENTS SHOULD NOT DEPEND ON THIS DOCUMENTS FOR ANY TRADING ADVISE / SIGNAL / DECISION.

CHART & GRAPHICS

THE CHARTS AND GRAPHICS PRESENTED IN THIS DOCUMENT MIGHT BE BEST-FITTED TO SHOWCASE IT'S RECENCY. FOR FULL DATA ACCURACY OR GRAPHICS-SENSITIVE DECISION PERTAINING TO THE RELEVANT CHART, INVESTORS ARE ADVISED TO REFER TO THE OFFICIAL SOURCE OF THE DATA. THE INFORMATION CONTAINED HEREIN DOES NOT SUGGEST OR IMPLY, AND SHOULD NOT BE CONSTRUCTED, IN ANY MANNER, AS A DIRECT OR INDIRECT TRADING SIGNAL OR TRADE CALL. PAST PERFORMANCE DOES NOT INDICATE FUTURE PERFORMANCES.

REFERENCE TO DATA IN THIS DOCUMENT ARE PROVIDED "AS IS" WITHOUT WARRANTY OF ANY KIND, EITHER EXPRESS OR IMPLIED. IN NO EVENT SHALL THE AUTHOR (Henry KH ANG) BE LIABLE FOR ANY SPECIAL, INCIDENTAL, INDIRECT OR CONSEQUENTIAL DAMAGES OF ANY KIND, OR ANY DAMAGE WHATSOEVER, INCLUDING, WITHOUT LIMITATION, THOSE RESULTING FROM THE USE OF DATA IN THIS DOCUMENT.

CALCULATION METHODOLOGY

BASE FUNDAMENTAL STRENGTH, BENCHMARK, SHORT-TERM STRENGTH INDEX (40 DAYS FUNDAMENTAL STRENGTH), CURRENCY DIFFERENTIALS (BASE, CURRENT) AND DERIVATION OF ITS SCORING IS FROM A COMPUTER-GENERATED CALCULATION MODEL. IT TAKES ALLOCATED FUNDAMENTAL DATA AND ITS RELATIVE STRENGTH, AVERAGES AS BASIS. STRENGTH OF FUNDAMENTAL DATA (PAST AND CURRENT) ARE STATISTICALLY ALLOCATED (PRE-DETERMINED BASIS) TO ARRIVE IN THE FORMULATED SCORING.

THE AUTHOR (Henry KH ANG) MAKE NO WARRANTY, EITHER EXPRESSED OR IMPLIED, INCLUDING BUT NOT LIMITED TO, WARRANTIES OF CORRECTNESS AND FITNESS FOR A PARTICULAR PURPOSE IN ALL CALCULATION AND DERIVATION OF SCORING IN THIS DOCUMENT. IN NO EVENT WILL THE AUTHOR (Henry KH ANG) BE LIABLE FOR ANY INDIRECT, SPECIAL, CONSEQUENTIAL, OR OTHER DAMAGES HOWEVER CAUSED.

SOURCES

ALL DATA SOURCES ARE REFERENCE IN THE CHART AND GRAPHICS PRESENTED IN THIS DOCUMENT. THE SOURCES ARE NON-COPYRIGHTED DATA COLLECTIONS. FOR MORE INFORMATION ON THE DATA, USERS ARE ADVISED TO VISIT THE INDIVIDUAL STATISTICAL AGENCIES.