

Daily Summary

26-Nov-2013 (Tuesday)

Last Updated: 10:52PM (GMT +0800)



Table 1: Base Fundamental Strength Index (Weighted Avg Strength for last 3months)

BASE	Strength
NZD	68.06
CAD	61.76
JPY	57.81
USD	57.14
GBP	51.79
AUD	44.23
EUR	34.44

Auto-Generated Suggestions 1:
 Auto-Generated Suggestions 2:
 Auto-Generated Suggestions 3:
 Auto-Generated Suggestions 4:

Recommended

Pair

Price

Short EUR/NZD at

Short AUD/NZD at

Short EUR/CAD at

Short AUD/CAD at

Real-Time LIVE Price Suggestion can be found at the below URL:

<http://www.forexfactory.com/kokhaing>

Trade suggestions are generated on the basis of paring the Stronger Currency against the Weaker currency.

Table 2: Current Fundamentals Strength Index (Weighted Avg Strength for current)

Current	Strength
AUD	62.71%
JPY	56.76%
NZD	47.37%
GBP	40.50%
USD	38.38%
CAD	27.78%
EUR	-16.17%

AUSTRALIAN DOLLAR (A\$) NEUTRAL to BULLISH

JAPANESE YEN (¥) STABLE, DOMESTIC RECOVERY EVIDENT.

NEW ZEALAND DOLLAR (NZ\$) STRONG (RATE HIKE POTENTIAL)

UK (£) FUNDAMENTAL STABLE; RECENT MOMENTUM BEARISH, STALE.

US DOLLAR (\$) FUNDAMENTAL IN STRONG RECOVERY, BUT RECENT DATA STALE.

CANADIAN DOLLAR (C\$) IN STEADY FUNDAMENTAL RECOVERY

EURO(€): FUNDAMENTALLY STILL WEAK, BEARISH.

Individual Currency Reports Available.

Subscription Link (Powered by MailChimp): <http://eepurl.com/lzGQ1>

Figure 1: Auto Generated Suggestion 1 Differentials Chart.

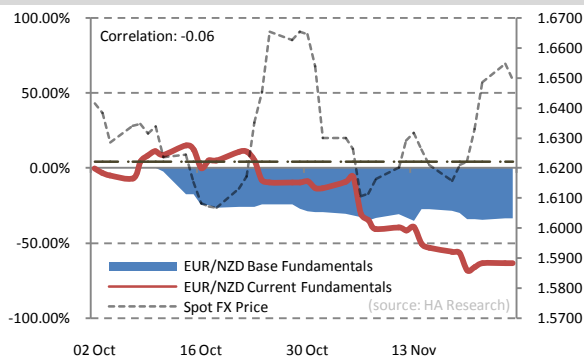
Comments: Pending

Figure 2: Auto Generated Suggestion 2 Differentials Chart.

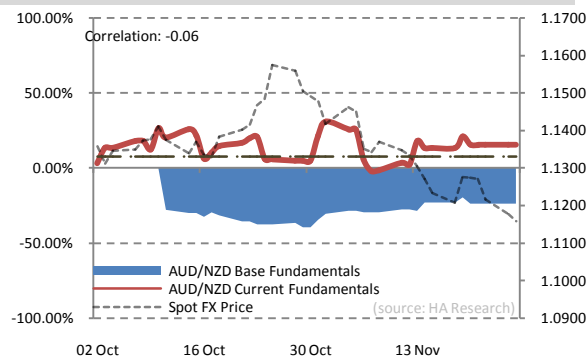
Comments: Pending

Figure 3: Auto Generated Suggestion 3 Differentials Chart.

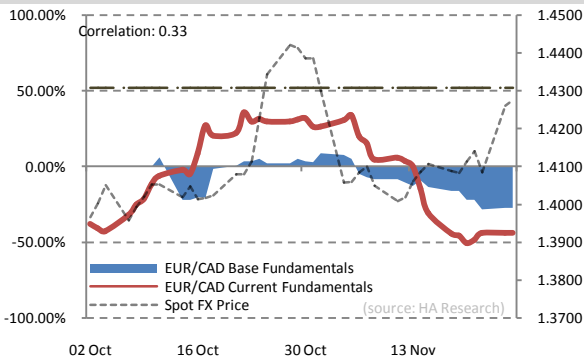
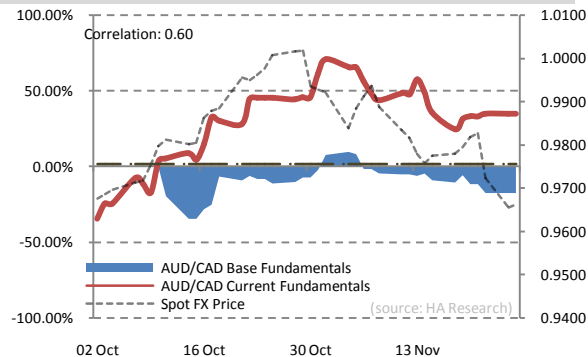
Comments: Pending

Figure 4: Auto Generated Suggestion 4 Differentials Chart.

Comments: PendingCorrelation is derived from data set between **Spot FX Price & Current Fundamental Index.**

All data figures, charts and graphics in this report auto-generated, commendatory are however manual. Results are not guaranteed.

For disclaimer & more information on the calculation methodology, please refer to the back cover of this document.