

## Main Dance trades checklist

**Warning:** Please go through the thread and manuals.

<http://www.forexfactory.com/showthread.php?t=224697>

<http://www.forexfactory.com/showthread.php?t=236210>

All disclaimers there apply. This is illustration document that I am sharing for free and without any guarantees. All credit to Eclayf and Kostas.

**Containment:** Nice parallel Mas

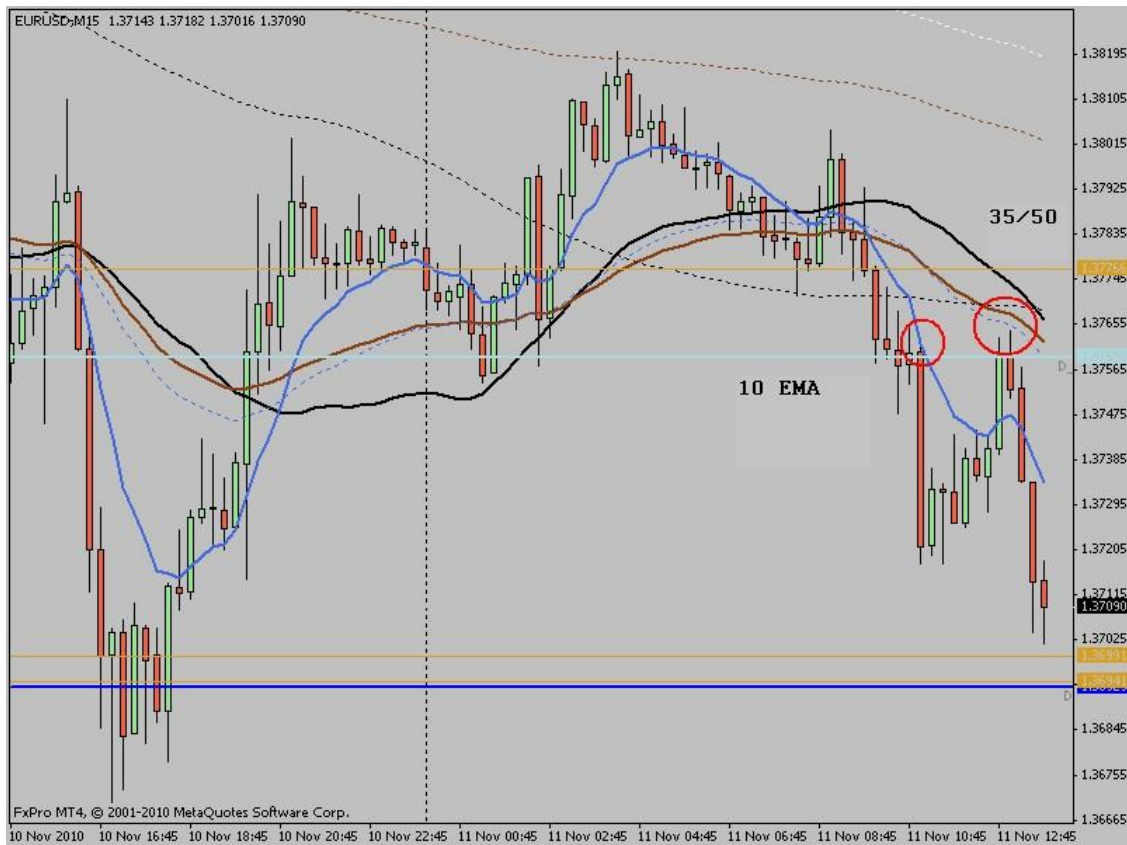
Small candles

Wicks though constraining MA are good confirmation



**10 EMA touch:** Very steep  
First/ second touch  
2 Bars

**35/ 50 Touch:** Steep  
First/ second touch  
MAs parallel or on top of each other or converging never diverging

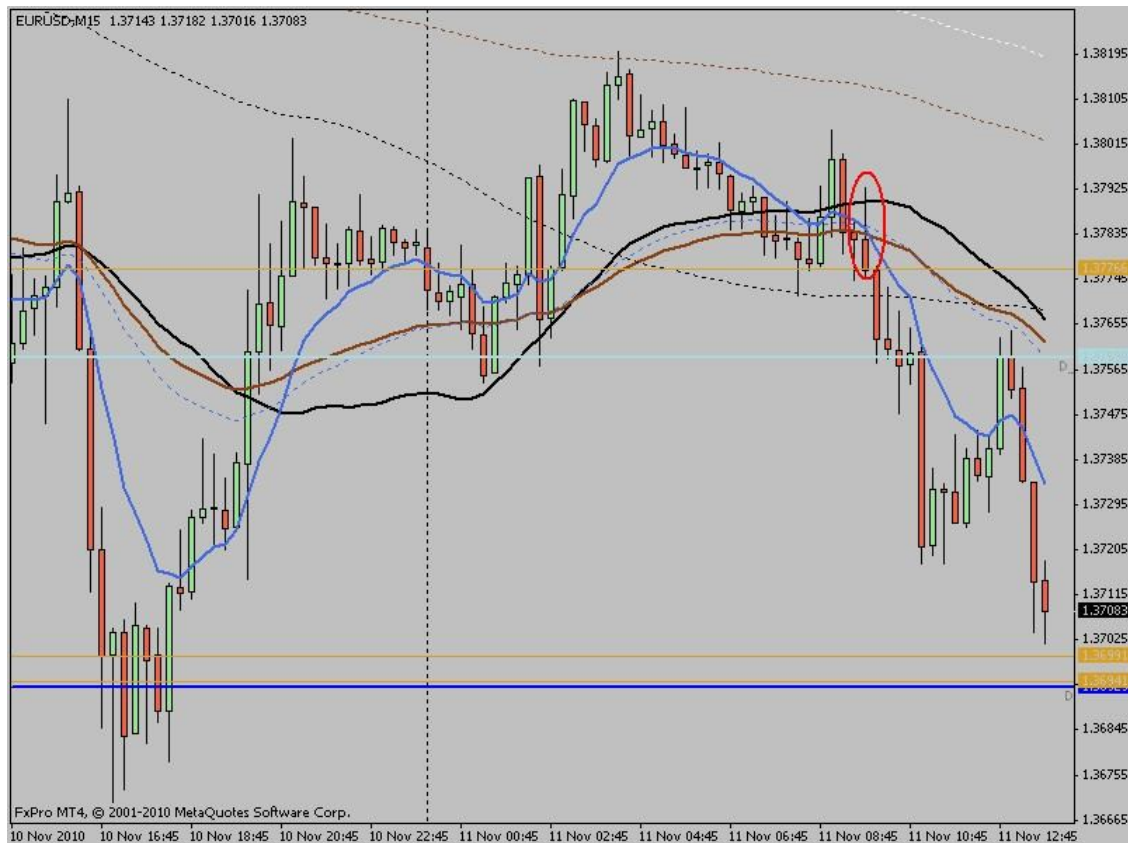


**Not core dance:** Some maybe in advanced rules. I have observed them to be good. However use with caution. I accept no responsibility and neither does anyone else associated with choros/ dance.

**Rejection bar:** Flat close together MAs

Single Wicks through all MAs and closes on other side

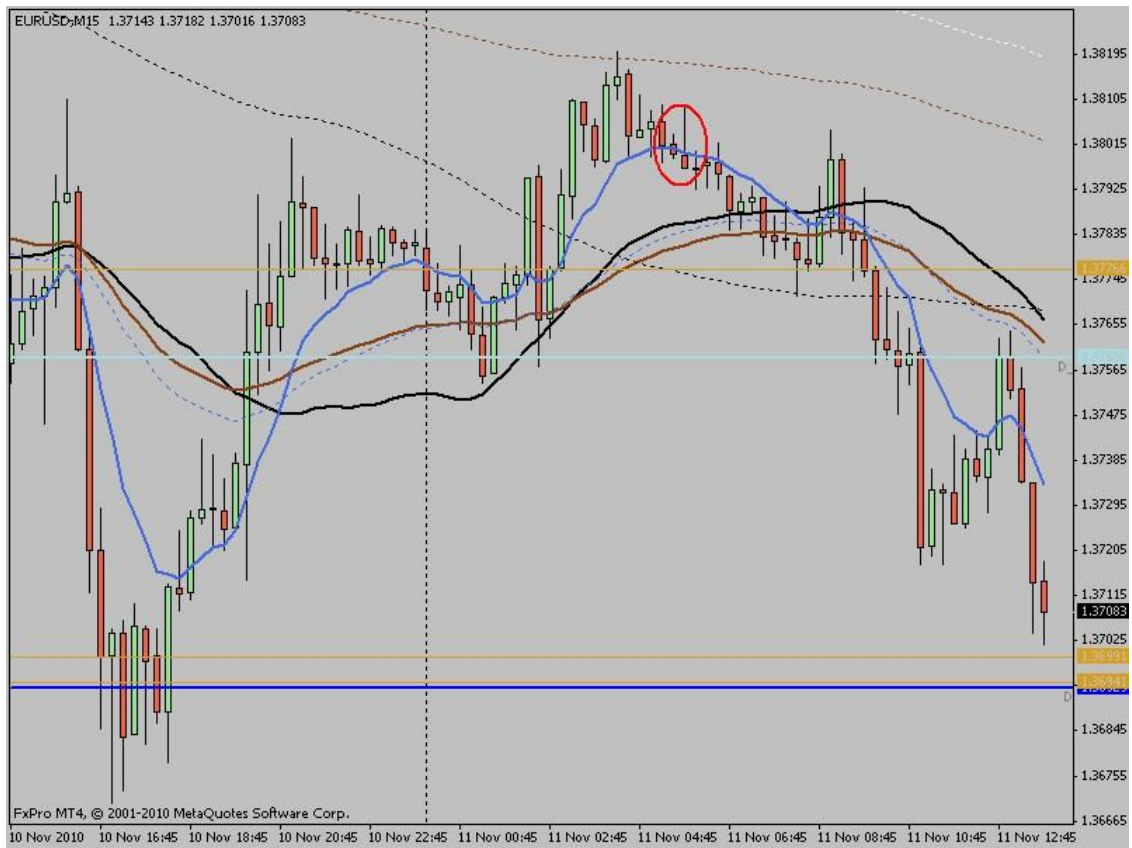
Shows which side it's going



### Contra trend bar: Turning 10 EMA

A bar with long wick though 10EMA but fails to close on that side

Best if far away from 35/50



**Expect big move:** when price crosses 35/50 that are flat and close together

