

Study of Extreme Market Consolidation of Spot Forex and Corresponding Breakout Patterns As Found on the Metatrader M15 Charts

By Forexhard

Related online discussion can be found here:

<http://www.forexfactory.com/showthread.php?t=302007>

Dear Reader,

In this PDF you will find 16 separate screen shots taken from various M15 charts. Within each picture is one or more green consolidation boxes which were draw by my custom Expert Advisor. **(This EA is not available to the general public, so please don't waste your time asking.)**

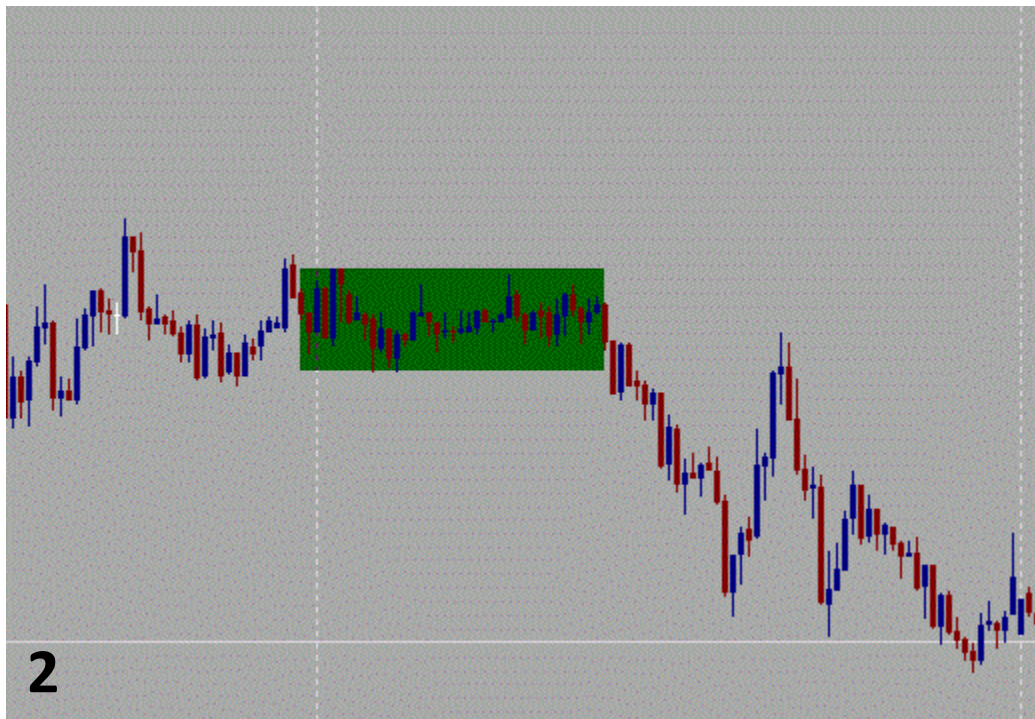
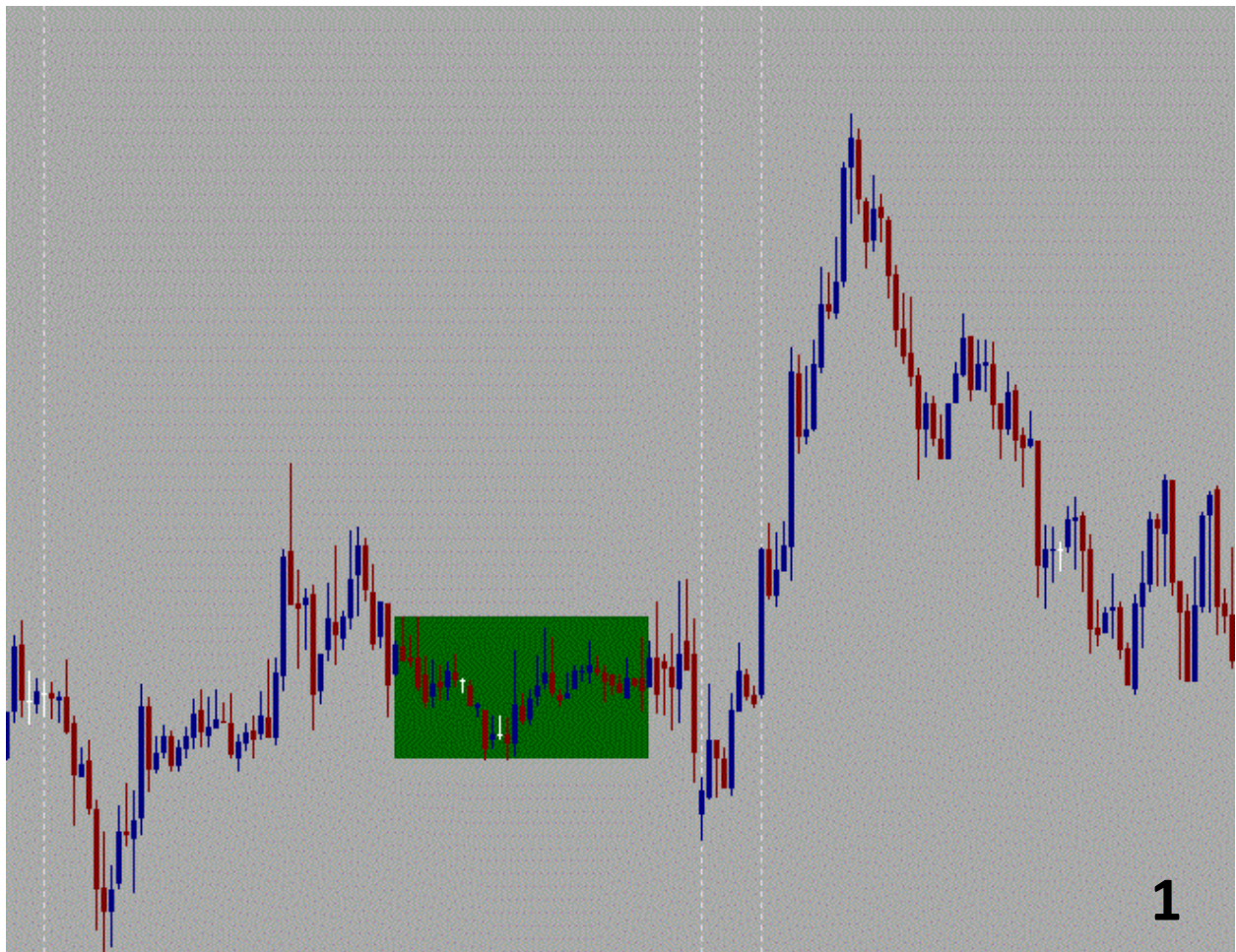
The consolidations shown here are 100% typical to my preferred breakout system. They are not hand drawn, and they are not cherry picked. I see these boxes forming every day, in every pair, and across every time frame.

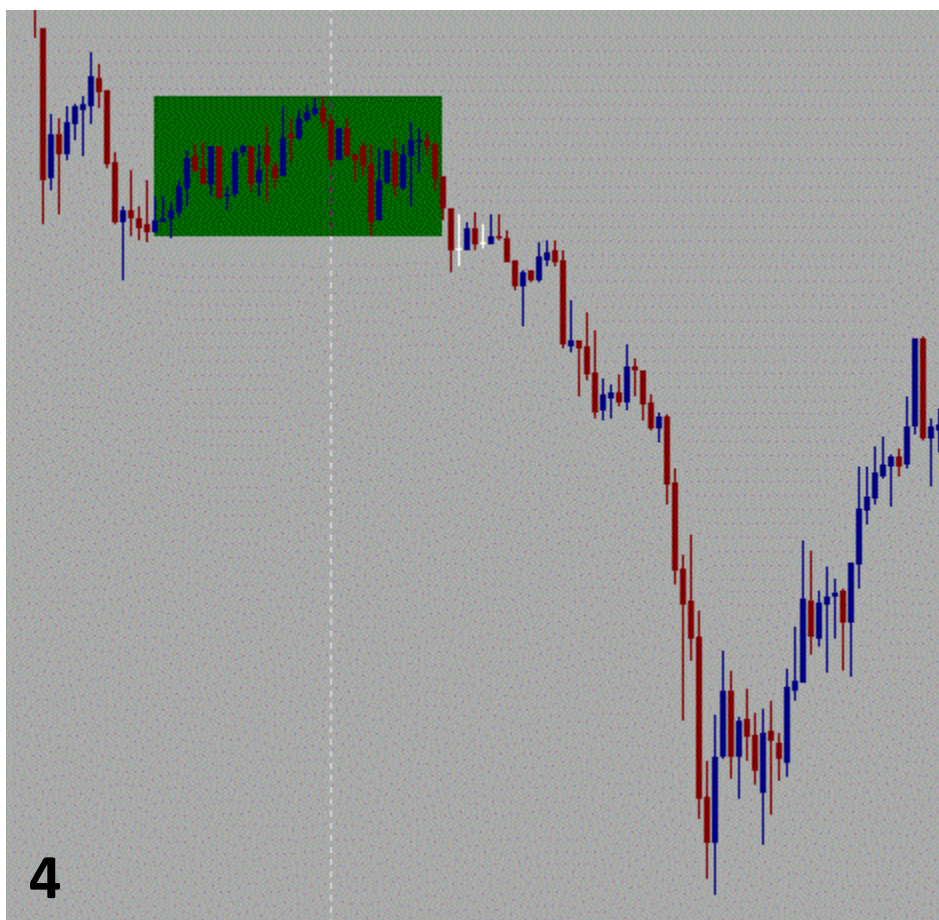
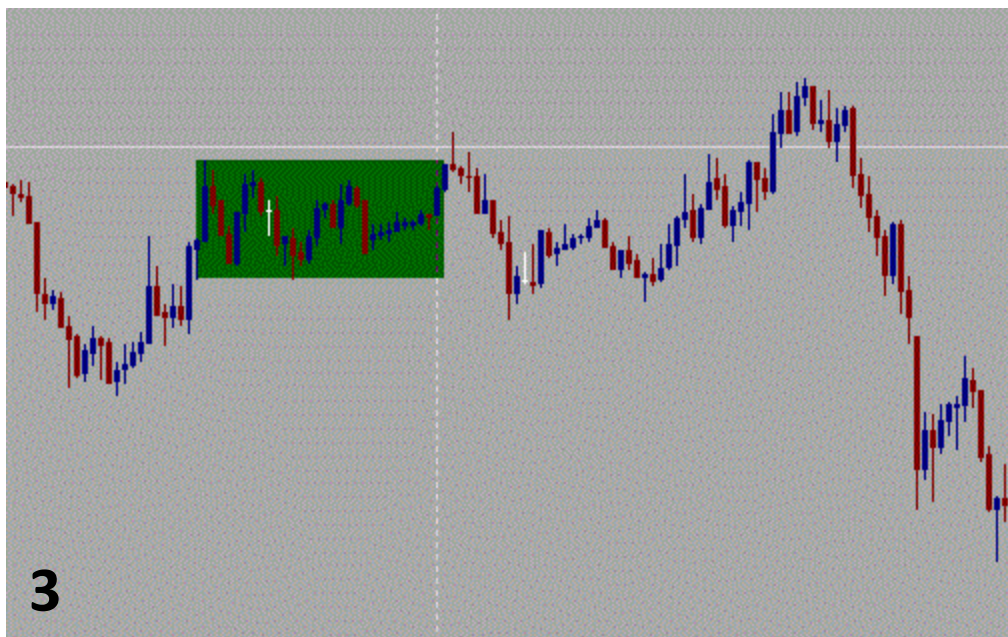
Although I have an EA which does the work of picking these consolidation zones for me now, I didn't always. I used to perform this work on my own. So there is no reason why you, the reader, can't learn to do the same thing by simply "eyeballing" a chart. It is in this spirit that I offer these pics to the general public – so that you can use them as guidelines as you teach yourself how to find these same CZ's quickly and with confidence, and without any outside help.

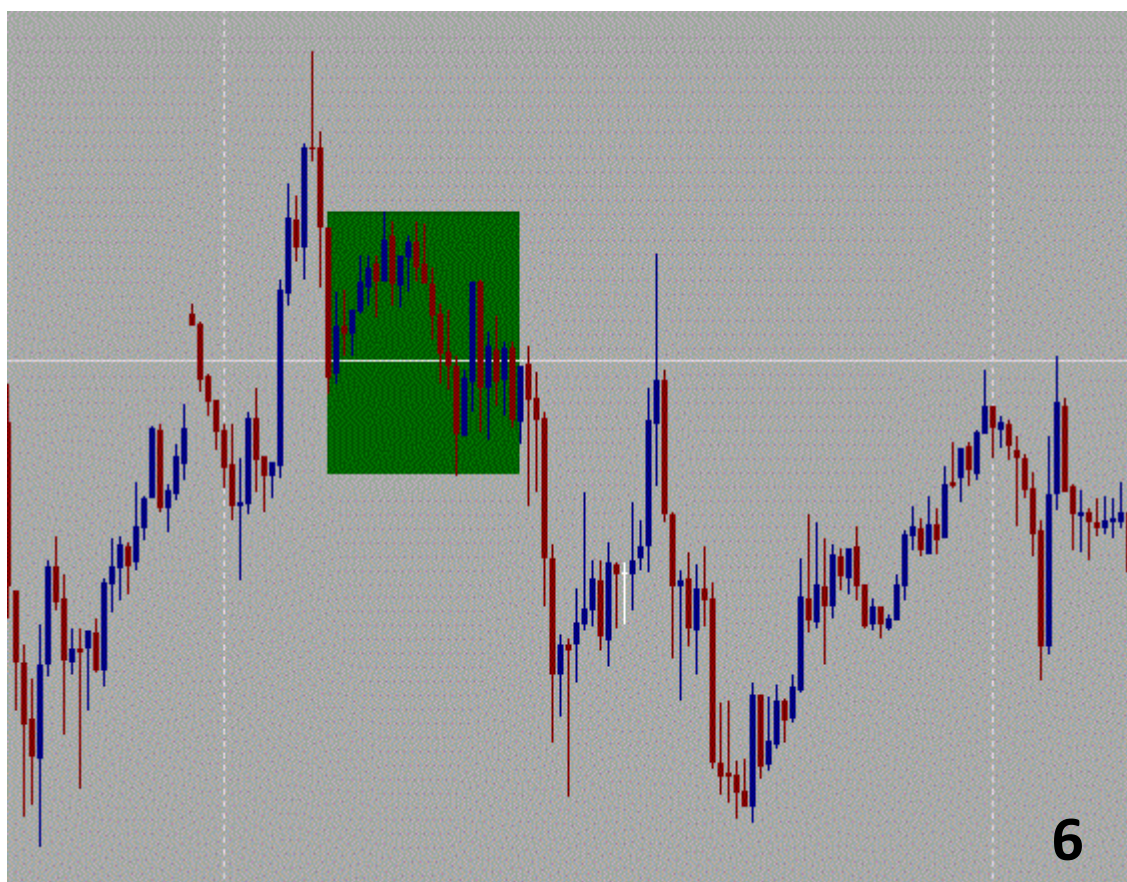
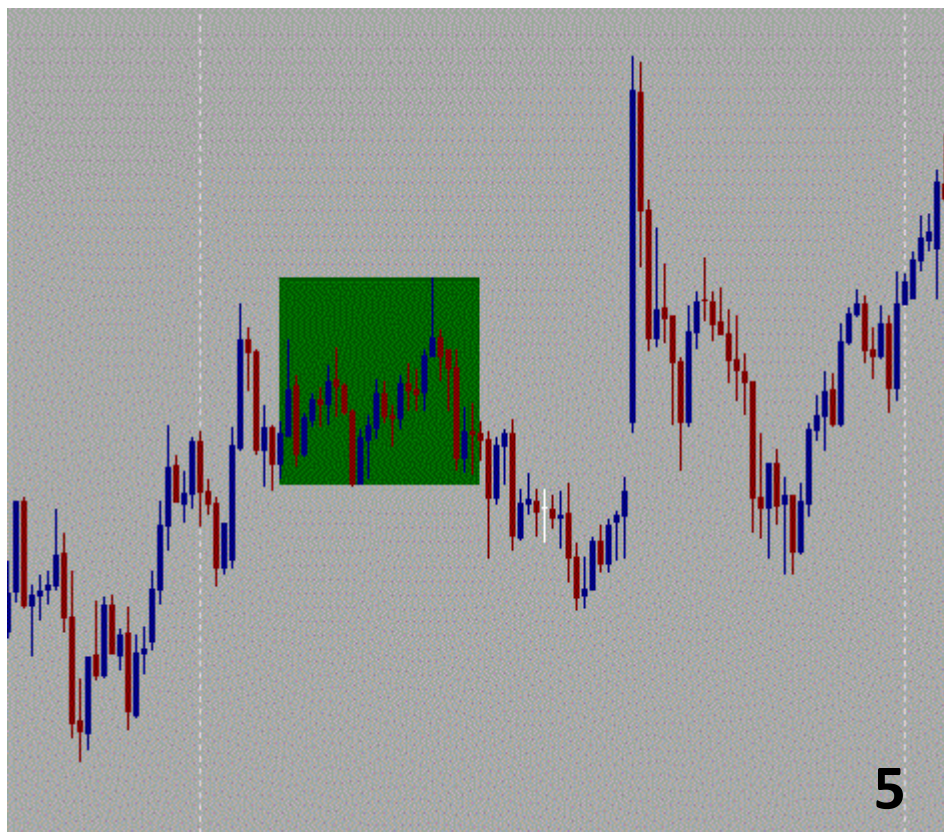
The photos are not presented here in any special order. They are numbered only to make it easier to discuss them at the FF.

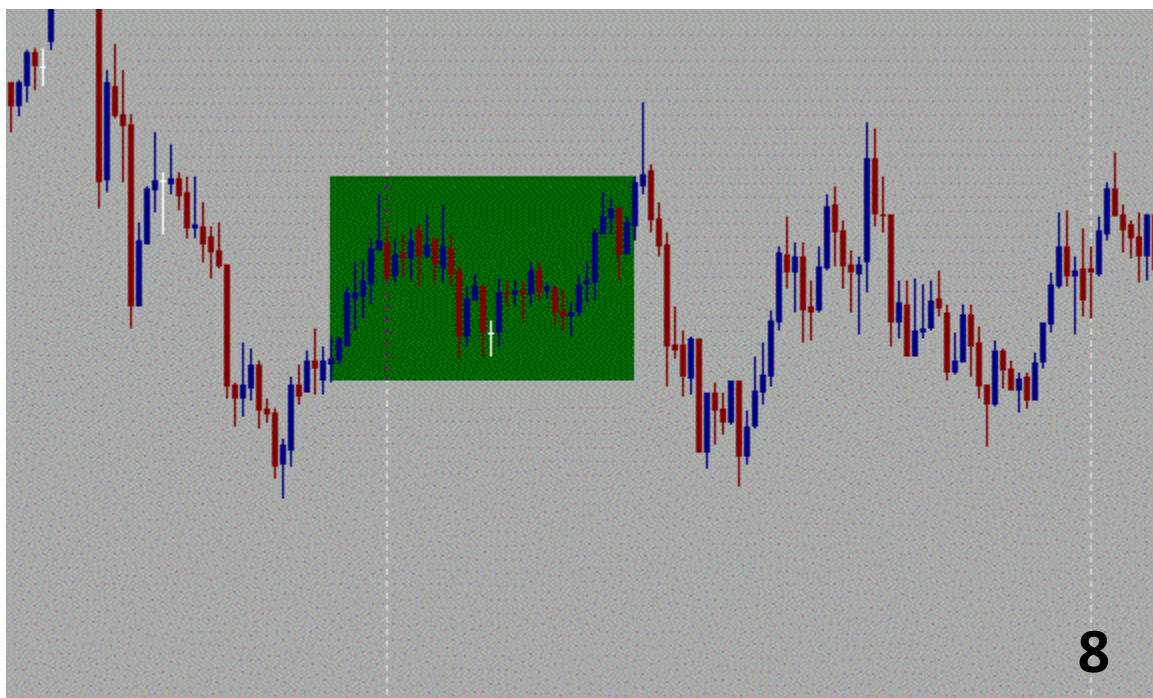
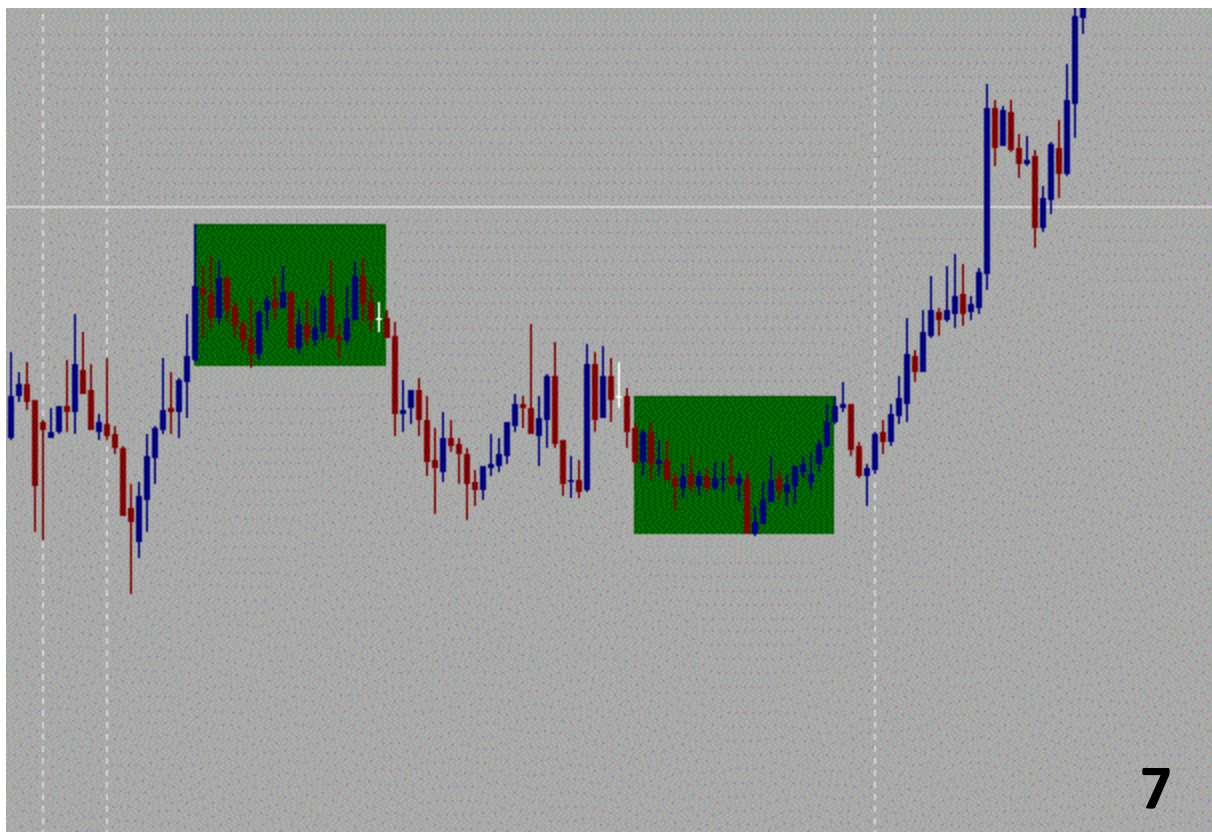
Finally, this PDF doesn't offer any specific trading strategy; this will come later, either by another PDF or within my Stairstep Breakout thread at the FF. And when I do start offering specific trading advice, I will use these same 16 photos for reference.

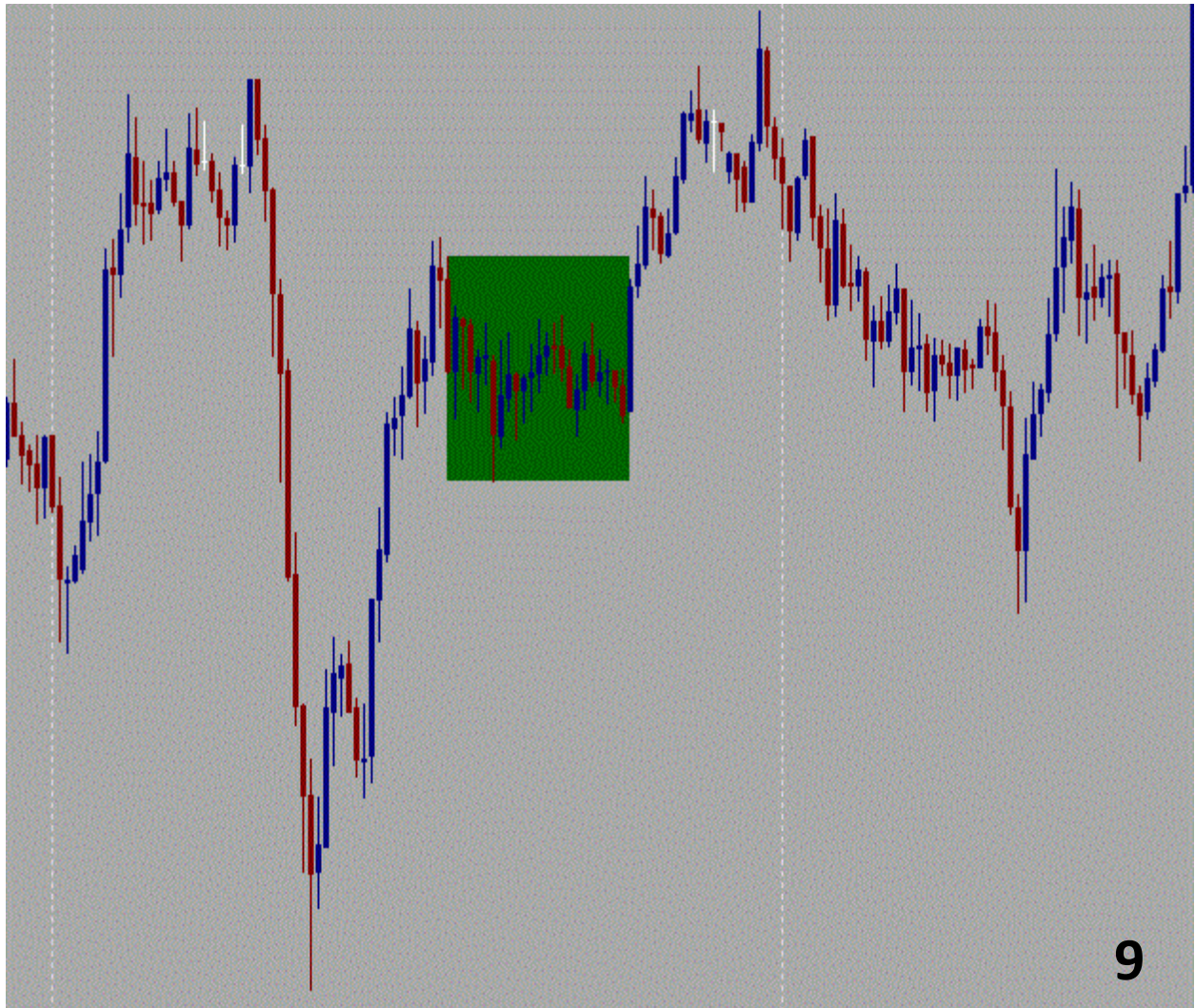
Best wishes to all,
Forexhard

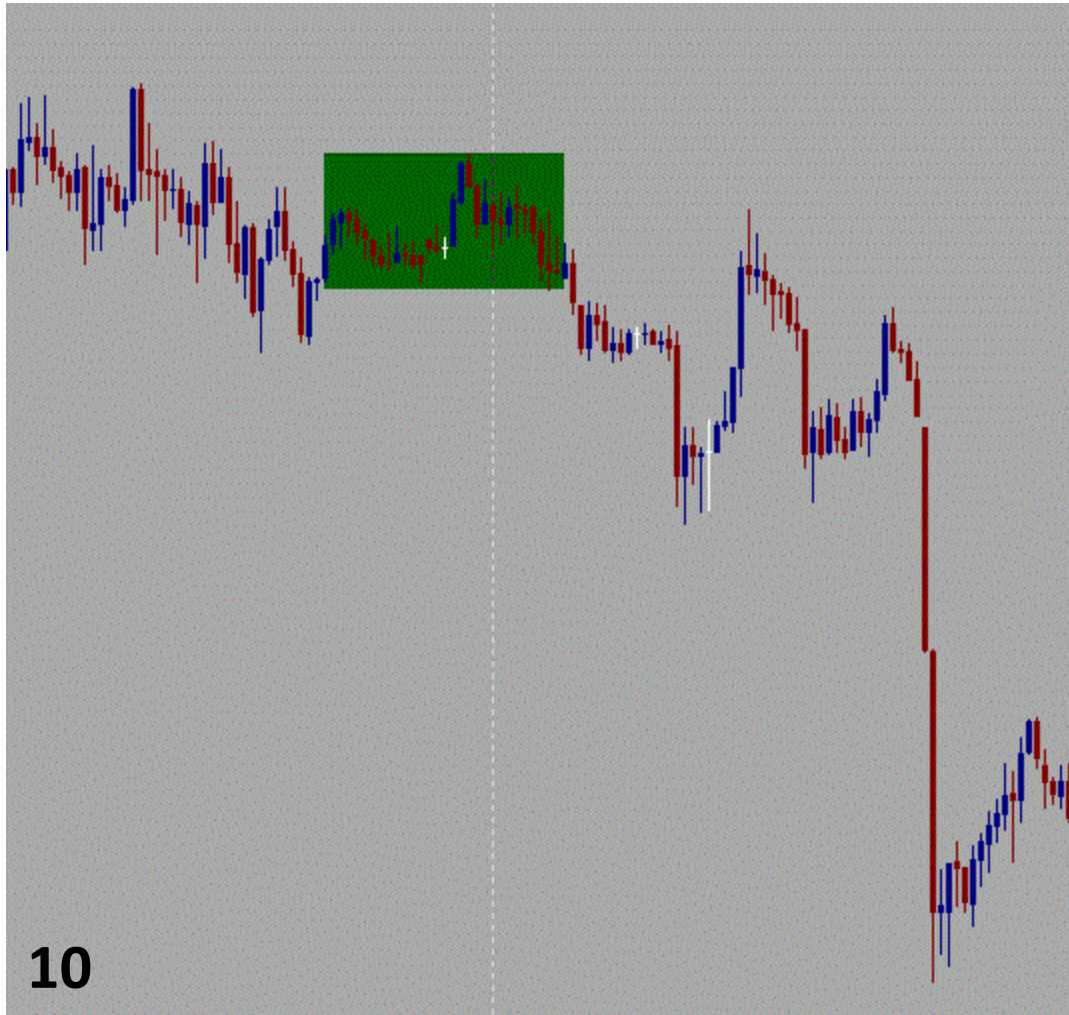












10

